

## Product Specification Summary

### Direct Digital Synthesis (DDS) Synthesizer for Ka-band SATCOM

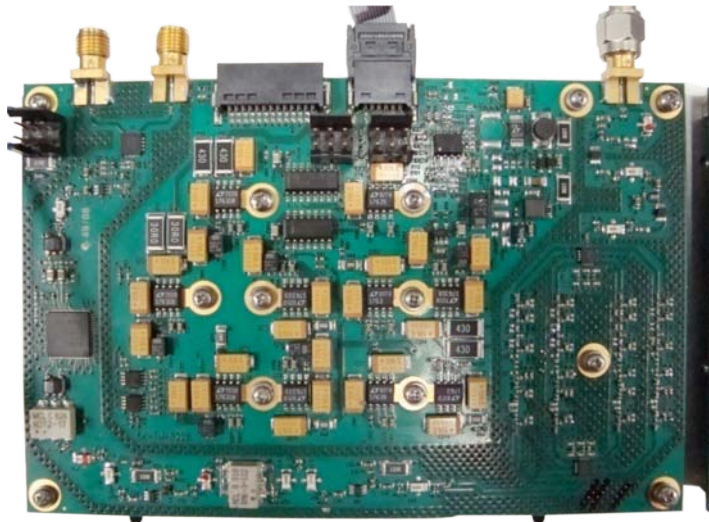
Narda's Ka-band Direct Digital Synthesizer (DDS) is one of a family of synthesizers that combine the sub-Hz step resolution and fast switching agility available with a DDS. The unit's low-frequency, narrowband DDS output is translated and expanded to 24.8 to 25.2 GHz with Narda direct and indirect synthesizer circuits to provide resolution of 1 Hz or less and high-speed switching. They can be designed for operation up to 40 GHz.

### SATCOM Series

#### Key features

- Combines fine step resolution with extremely fast switching speed of less than 300 ns
- Extremely low phase noise
- High spurious and harmonic rejection
- Custom configurations and specifications available

Narda's Ka-band DDS synthesizer



Input reference frequencies (MHz)	10
Output frequency range (GHz)	24.8 to 25.2
Output frequency step size (MHz)	1
Frequency transition time (ns)	Less than 300
Typical phase noise (dBc/Hz)	
100 Hz offset	-70
1 kHz offset	-88
10 kHz offset	-105
100 kHz offset	-116
1 MHz offset	-132
Spurious rejection (dBc)	>55

Please consult the factory for detailed product specifications.

**narda**  
microwave-east

an  communications company

Address: 435 Moreland Road, Hauppauge, NY 11788

Phone: (631) 231-1700

Fax: (631) 231-1711

Web: <http://www.nardamicrowave.com>

E-Mail: [nardaeast@l-3com.com](mailto:nardaeast@l-3com.com)

Cleared by DoD/OSR for public release under OSR case number 10-S-1085 on 4 May 2010