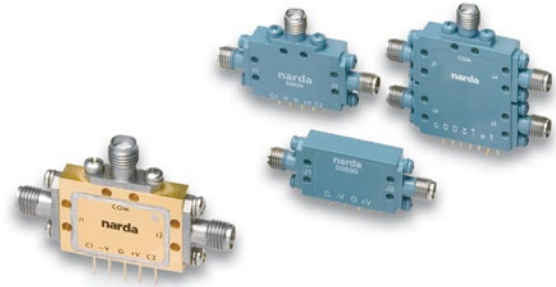


## Solid State PIN Control Products

0.2-5.0 GHz

### Custom High Power Switches

- Custom Designs
- High CW Power - up to 50 W
- High Peak Power - up to 500 W
- Reflective
- SPST through SP6T



#### Description

Narda High Power switches are custom designed units utilizing materials selected for power dissipation. These switches feature a special driver with TTL control. The driver is capable of supplying reverse-bias of up to -100 V and forward current of 150 mA.

#### Examples of Custom Designs

FUNCTION	FREQUENCY RANGE (GHz)	SWITCHING TIME MODULATION* (μs)	CW POWER (W)	PEAK POWER* (W)	PULSE WIDTH (μ)	OUTLINE DRAWING
SP2T	1-6**	3	50	500	100 <sup>‡</sup>	1
SP2T	3.1-3.5	400	25	250	100	2
SP3T	0.2-0.8	3	2	10	50	3
SP6T	4.4-5.0	0.1	5	15	10	4

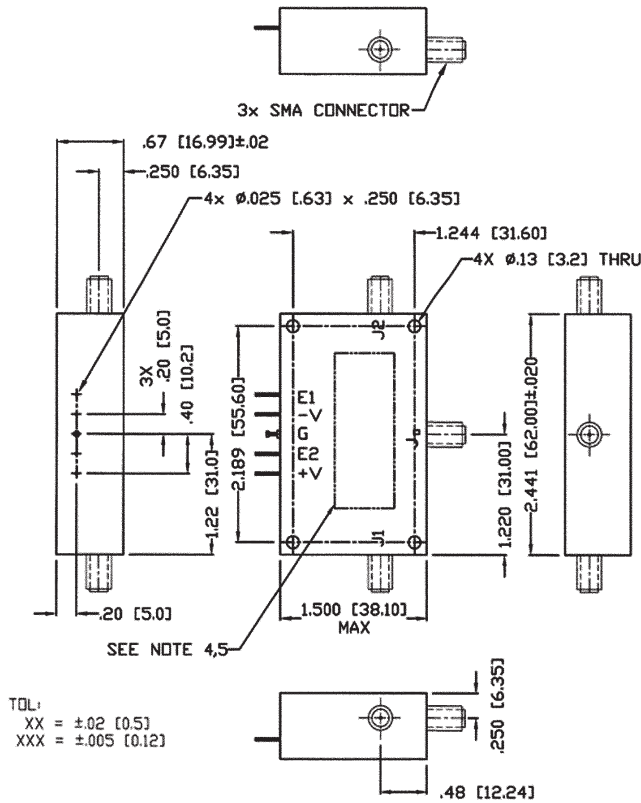
\* Cold switching

\*\* Bandwidth is up to 25% within the frequency range

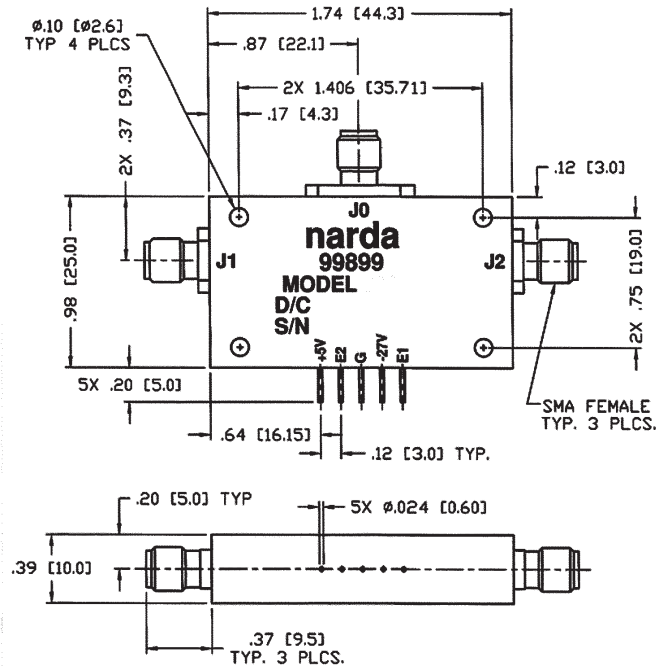
‡ The maximum pulse width depends on the maximum input power and duty cycle Bandwidth is up to 25% within the frequency range

# Solid State PIN Control Products

## Typical Outline Drawings



Outline Drawing 1  
SP2T 1.0-6.0 GHz PIN Switch

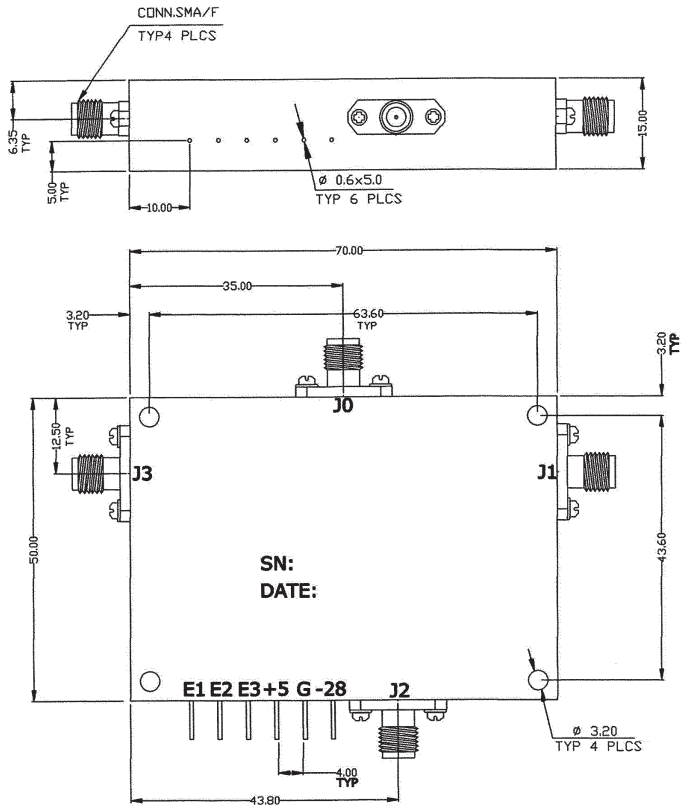


Outline Drawing 2  
SP2T 3.1-3.5 GHz PIN Switch

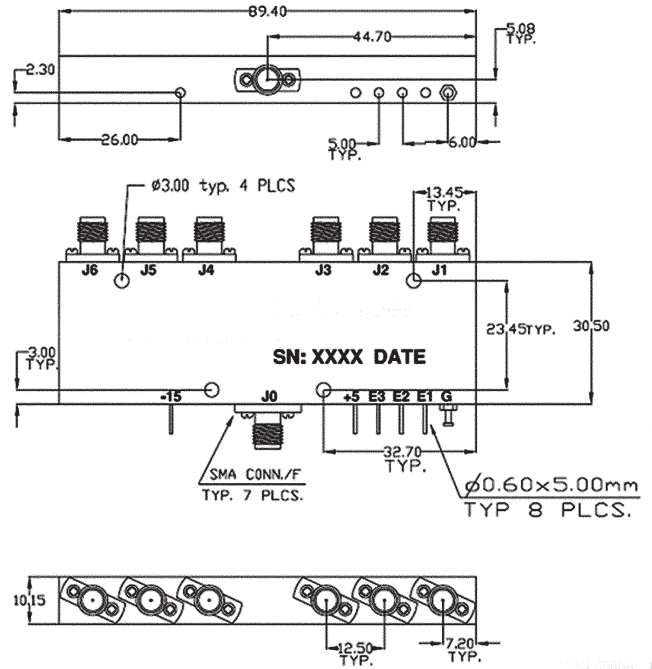
Dimensions in inches (mm in parentheses), unless otherwise specified.

# Solid State PIN Control Products

## Typical Outline Drawings



Outline Drawing 3  
SP3T 0.2-0.8 GHz PIN Switch



Outline Drawing 4  
SP6T 4.4-5.0 GHz PIN Switch

Dimensions in inches, unless otherwise specified.