

# Power Dividers

1800-2000 MHz

## Power Combiners / Dividers: PCS and DCS

- Wireless Coverage
- Can Combine Very High Power Non-Coherent Signals



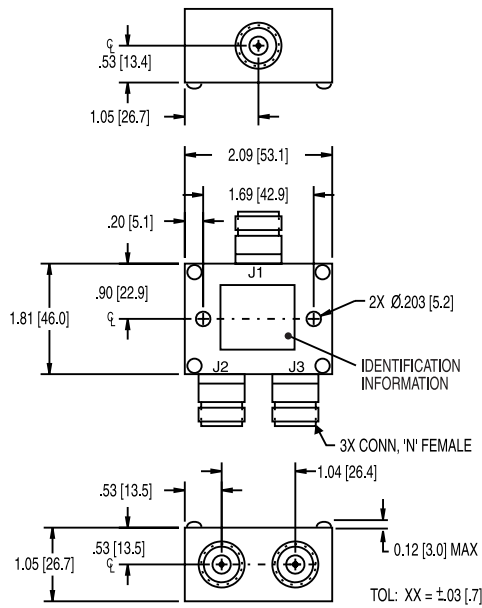
### Specifications

Type N, 2-, 3- and 4-Way, 1800 to 2000 MHz

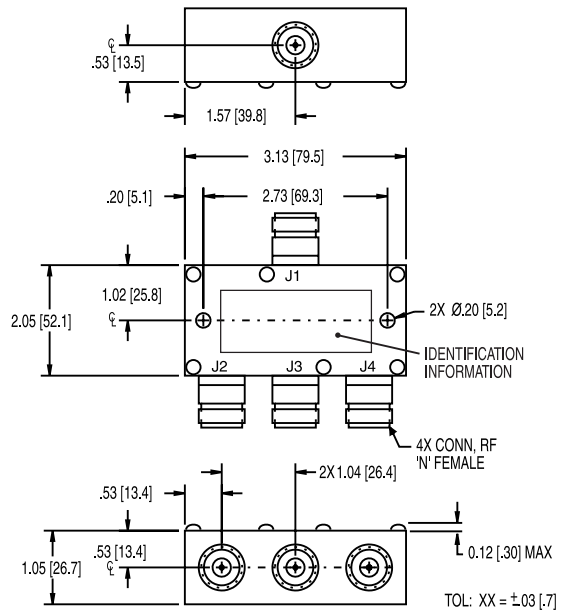
FREQUENCY RANGE (MHz)	MODEL	VSWR (max.)		INSERTION LOSS (dB max.)		ISOLATION (dB min.)	AMPLITUDE BALANCE (dB max.)	PHASE BALANCE (max.)	TOTAL INPUT POWER*				WEIGHT	
		INPUT	OUTPUT	EXCLUDING COUPLED POWER	INCLUDING COUPLED				POWER DIVIDER OPERATION PORT J1		POWER COMBINER OPERATION MAX POWER PER PORT		oz.	gr.
									AVERAGE (W)	PEAK (kW)	AVERAGE (W)	PEAK (kW)		
1800-2000	2362-2	1.3	1.2	0.5	3.5	20	0.2	±6°	80	3	40	1.5	4.9	140
1800-2000	2362-3	1.3	1.2	0.6	5.4	20	0.2	±10°	80	3	27	1	8.1	230
1800-2000	2362-4	1.3	1.2	0.8	6.9	20	0.2	±6°	100	3	25	.75	10.9	310

\* Case Temperature must be limited to 85° C maximum, cooling fan may be required

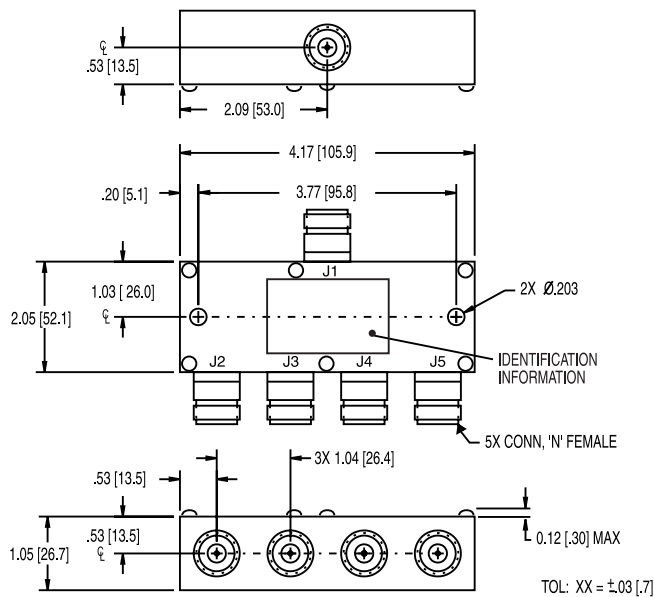
Outline Drawings



MODEL 2362-2



MODEL 2362-3



MODEL 2362-4

Dimensions in inches (mm in parentheses), unless otherwise specified.