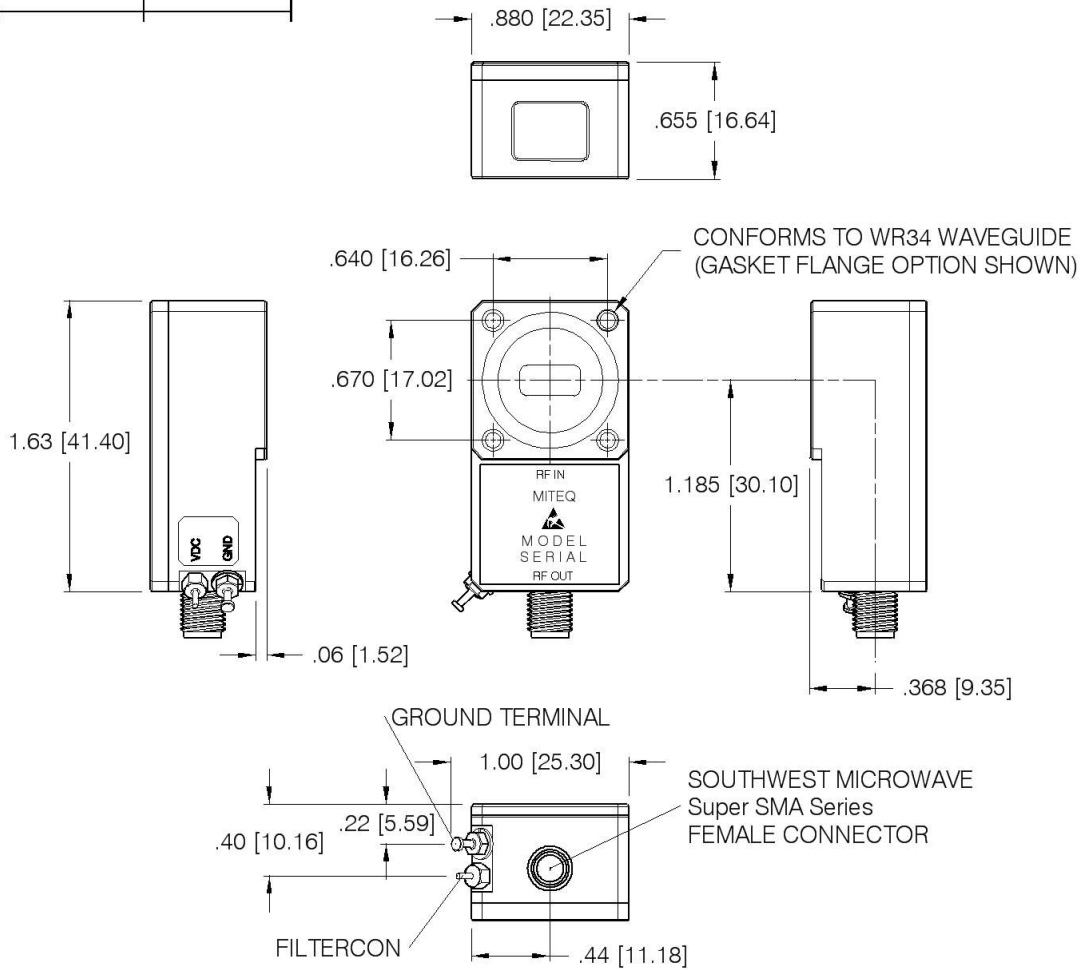


DASH NO.	APPLICATION		REVISIONS			
	NEXT ASSY	USED ON	LTR	DESCRIPTION	DATE	APPROVED
			B	Incorporate ECN 32868	02/10/15	<i>R.Scherer</i>



NOTES:

1. DIMENSIONS IN BRACKETS ARE METRIC EQUIVALENT

2. MATERIAL & FINISH: ALUMINUM WITH TRIVALENT CHROMATE CONVERSION

3. ESTIMATED WIEGHT 38 GRAMS

NUMBER	FLANGE OPTION	FLANGE HOLE
-1	STANDARD COVER FLANGE	Ø.117 THRU
-2	GASKET FLANGE	4-40 UNC 2B

UNLESS OTHERWISE SPECIFIED DIMENSIONS ARE IN INCHES TOLERANCES ON	NAME	DATE	 100 Davids Drive, Hauppauge, New York 11788		
	DWN <i>R.Scherer</i>	09/04/14			
DECIMAL .X ±0.1 [2.5] DECIMAL .XX ±0.01 [0.25] DECIMAL .XXX ±0.005 [0.13] ANGLES X° ±30'	DFT DGN <i>R.Scherer</i>	02/10/15	WR34 WAVEGUIDE LNA OUTLINE RIGHT ANGLE		
	PROJ ENGR <i>J. Buonaiuto</i>	02/12/15			
PROJECTION	MFG ENGR		SIZE	CODE IDENT. NO.	REV
	Q.C.		A	33592	B
	CUST		SCALE 1:1	PROJECT	SHEET OF 1