

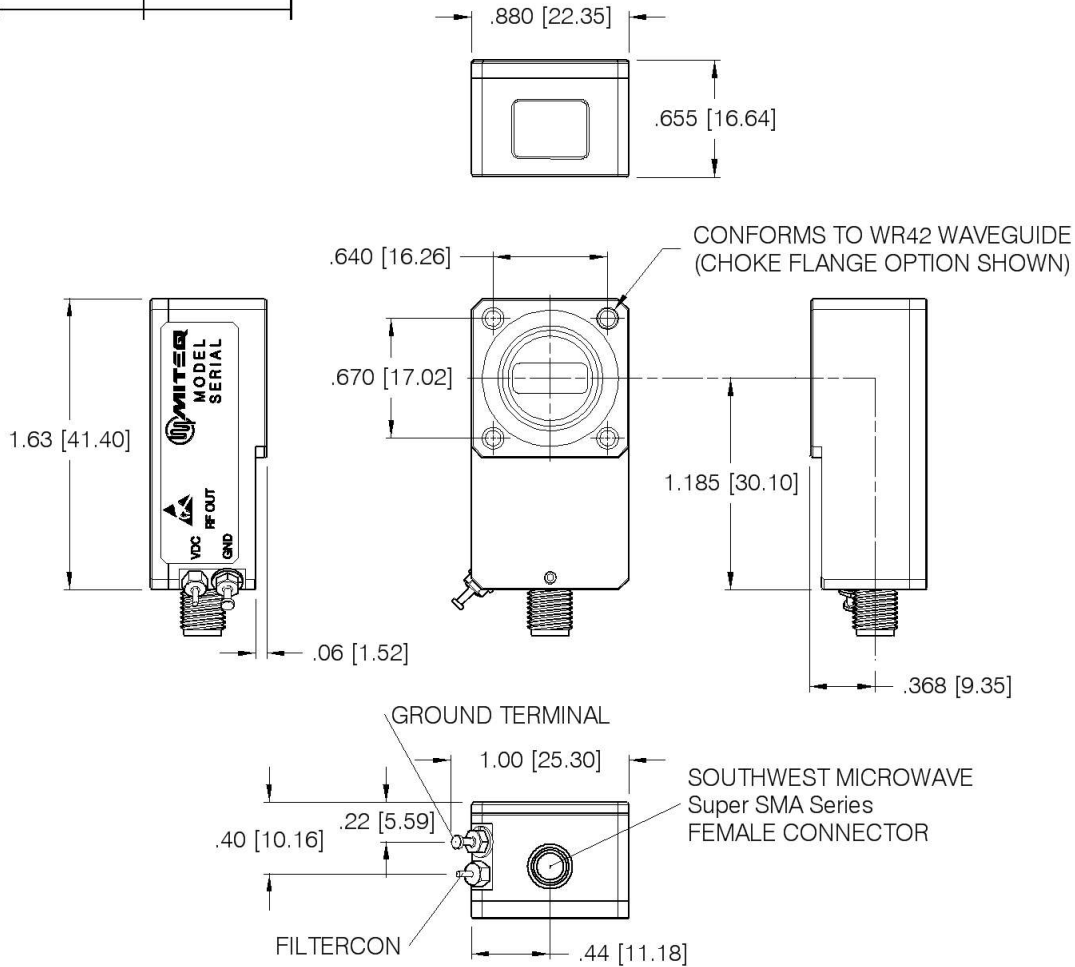
Current Revision

As of 3/26/2014 1:01:27 PM

DWALATA



DASH NO.	APPLICATION		REVISIONS			
	NEXT ASSY	USED ON	LTR	DESCRIPTION	DATE	APPROVED
			A	Initial Release	03/12/14	<i>R.Scherer</i>



NOTES:

1. DIMENSIONS IN BRACKETS ARE METRIC EQUIVALENT

2. MATERIAL & FINISH: ALUMINUM WITH TRIVALENT CHROMATE CONVERSION

3. ESTIMATED WIEGHT 38 GRAMS

NUMBER	FLANGE OPTION
-1	STANDARD COVER FLANGE
-2	GASKET FLANGE
-3	CHOKE FLANGE

UNLESS OTHERWISE SPECIFIED DIMENSIONS ARE IN INCHES TOLERANCES ON	NAME	DATE	 100 Davids Drive, Hauppauge, New York 11788			
	DWN <i>R.Scherer</i>	03/12/14				
DECIMAL .X ±0.1 [2.5] DECIMAL .XX ±0.01 [0.25] DECIMAL .XXX ±0.005 [0.13] ANGLES X° ±30'	DFT DGN <i>R.Scherer</i>	03/12/14	Ka BAND WAVEGUIDE LNA OUTLINE RIGHT ANGLE WR42			
	PROJ ENGR <i>J. Decker</i>	03/26/14				
PROJECTION	MFG ENGR		SIZE	CODE IDENT. NO.		REV
ESD SENSITIVE	Q.C.		A	33592	210951	A
	CUST		SCALE	PROJECT	SHEET	OF 1