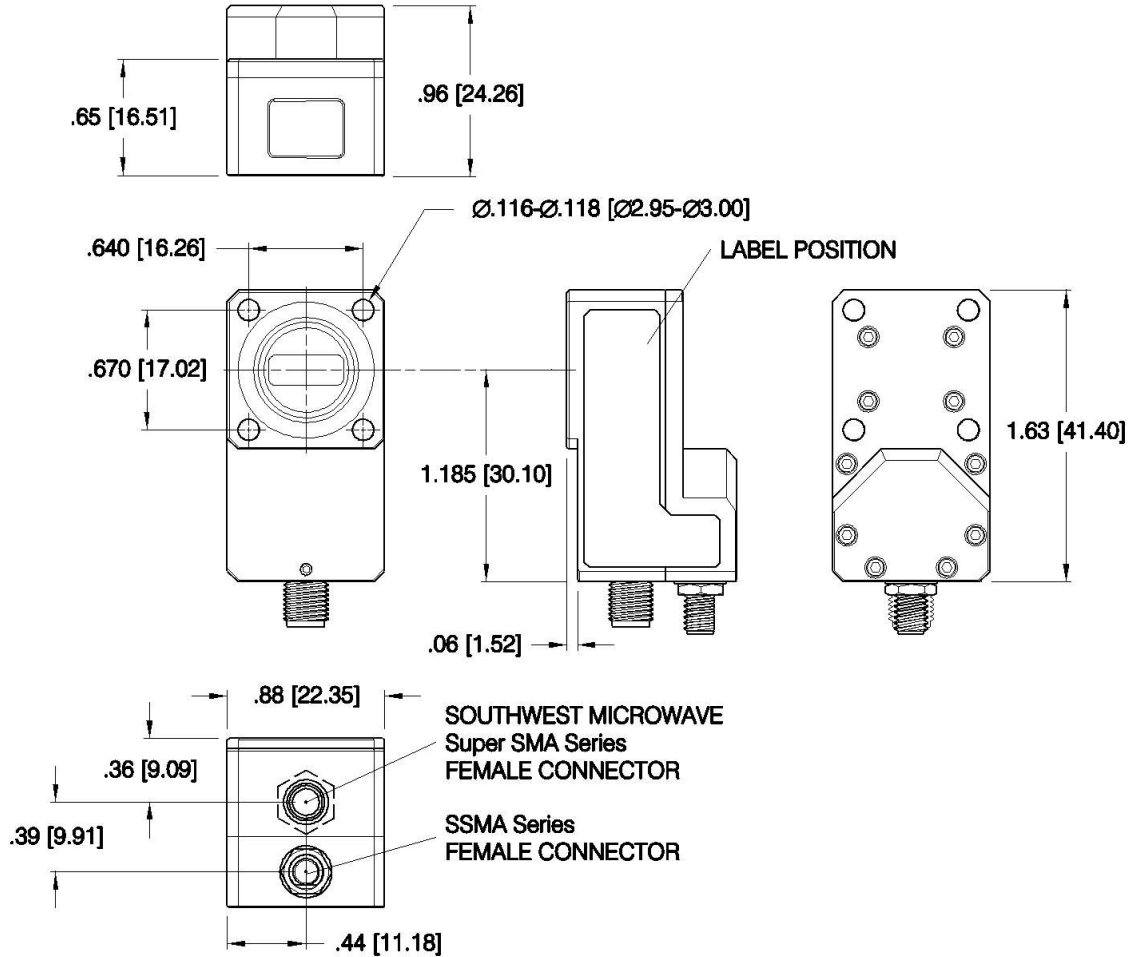


DASH NO.	APPLICATION		REVISIONS			
	NEXT ASSY	USED ON	LTR	DESCRIPTION	DATE	APPROVED
			E	Incorporate ECN 34455	08/26/15	<i>[Signature]</i>



NOTES:

1. DIMENSIONS IN BRACKETS ARE METRIC EQUIVALENT

2. MATERIAL & FINISH: ALUMINUM WITH TRIVALENT CHROMATE CONVERSION

UNLESS OTHERWISE SPECIFIED DIMENSIONS ARE IN INCHES TOLERANCES ON	NAME	DATE	 100 Davids Drive, Hauppauge, New York 11788			
	DWN	02/19/14				
DECIMAL .X ±0.1 [2.5] DECIMAL .XX ±0.01 [0.25] DECIMAL .XXX ±0.005 [0.13] ANGLES X° ±30°	DFT	08/26/15	Ka BAND WAVEGUIDE LNA OUTLINE RIGHT ANGLE WR42/CUSTOM CHOKE FLANGE WITH THRU HOLE			
	DGN	<i>[Signature]</i>				
PROJECTION	PROJ ENGR	08/26/15	SIZE	CODE IDENT. NO.	210731	REV
	ENGR	<i>J. Decker</i>	A	33592		E
ESD SENSITIVE	MFG ENGR		SCALE	PROJECT	SHEET	OF
	Q.C.				1	1
	CUST					