

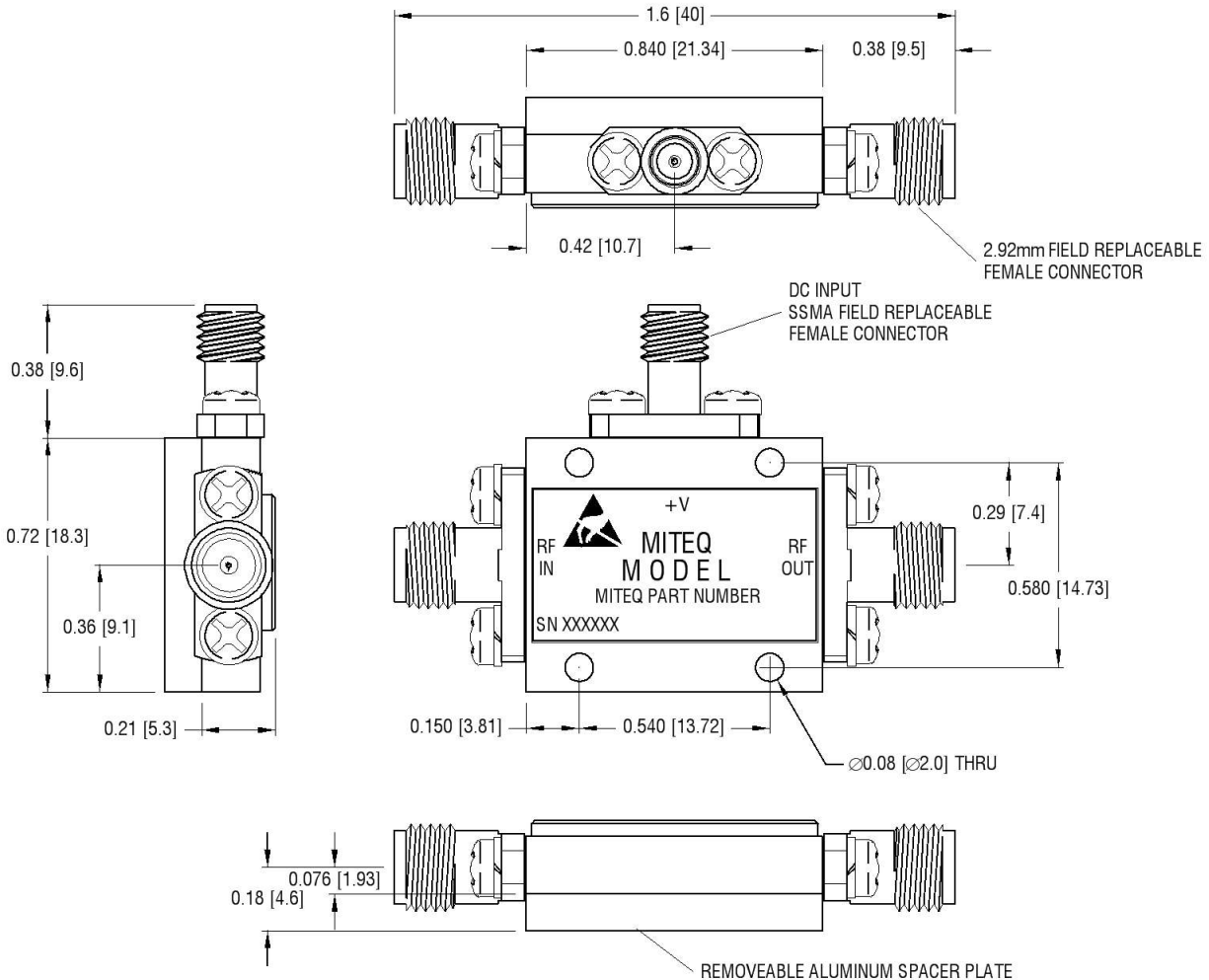
Current Revision

As of 9/2/2010 5:14:33 PM

DWALATA



DASH NO.	APPLICATION		REVISIONS			
	NEXT ASSY	USED ON	LTR	DESCRIPTION	DATE	APPROVED
			B	Incorporate ECN 192606	08/16/10	<i>R.Scherer</i>



- NOTES:**
1. HOUSING, HERMETICALLY SEALED KOVAR
 2. FINISH 50-80 MICRO INCHES GOLD PLATE ON ELECTROLESS NICKEL 100-200 MICRO INCHES
 3. CONNECTORS STAINLESS STEEL, PASSIVATED
 6. ESTIMATED WEIGHT 18.7 GRAMS
 7. DIMENSIONS IN BRACKETS ARE METRIC EQUIVALENT.

UNLESS OTHERWISE SPECIFIED DIMENSIONS ARE IN INCHES TOLERANCES ON	NAME	DATE	 100 Davids Drive, Hauppauge, New York 11788		
	DWN <i>R.Scherer</i>	11/17/09			
DECIMAL .X ±0.1 [2.5] DECIMAL .XX ±0.01 [0.25] DECIMAL .XXX ±0.005 [0.13] ANGLES X° ±30'	DFT	DATE	SMPN-2 AMPLIFIER 2.92mm IN AND OUT, SSMA DC OUTLINE		
	DGN <i>R.Scherer</i>	08/16/10			
 ESD SENSITIVE COMPONENT	PROJ	DATE	SIZE	CODE IDENT. NO.	REV
	ENGR <i>F. Shekarabi</i>	09/02/10	A	33592	B
	MFG		192606		
	ENGR		SCALE	PROJECT	SHEET OF 1
	Q.C.				
	CUST				