

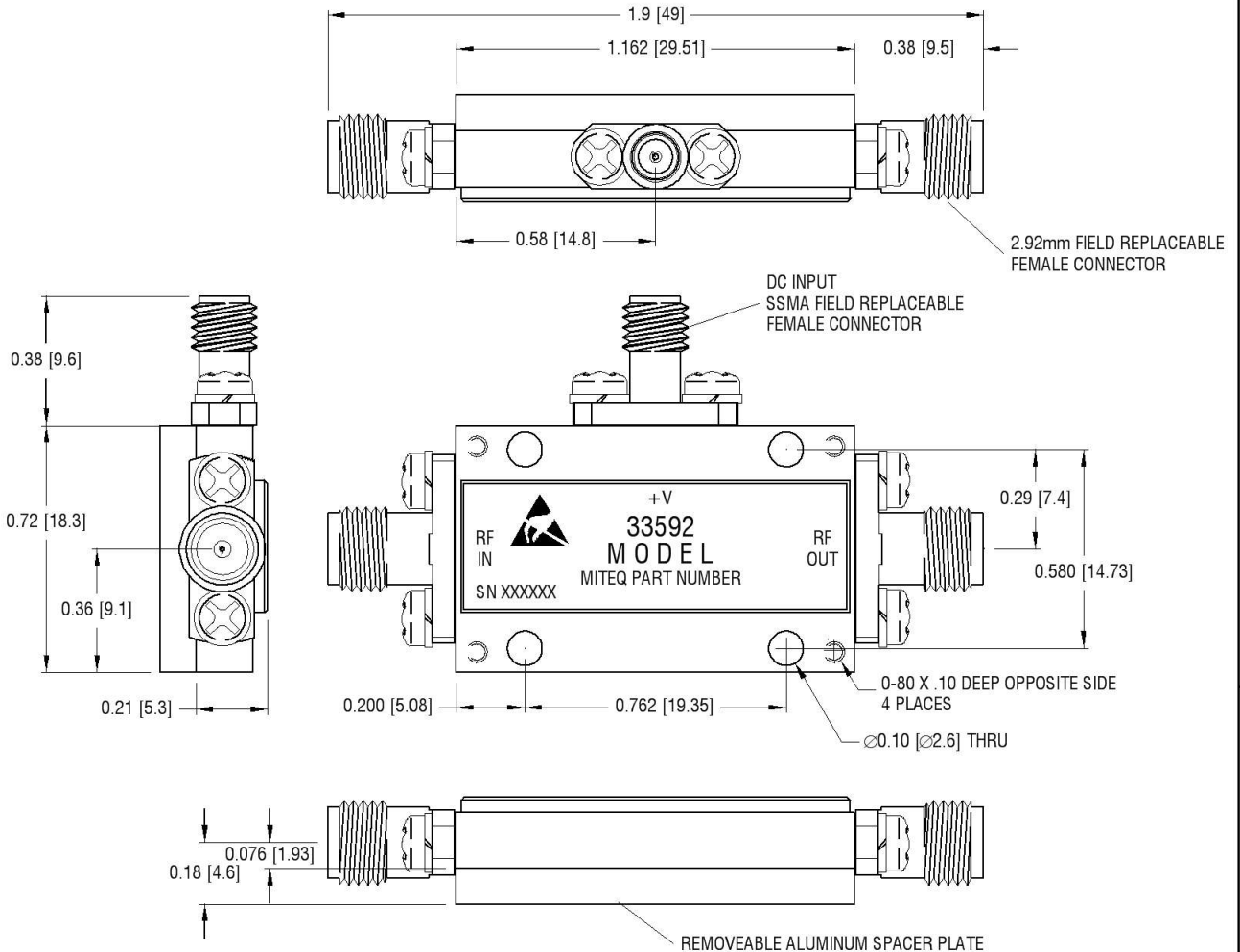
Current Revision

As of 4/9/2010 8:59:21 AM

DWALATA



DASH NO.	APPLICATION		REVISIONS			
	NEXT ASSY	USED ON	LTR	DESCRIPTION	DATE	APPROVED
			B	Incorporate ECN 15689	04/08/10	



NOTES:

1. HOUSING, HERMETICALLY SEALED KOVAR
2. FINISH 50-80 MICRO INCHES GOLD PLATE ON ELECTROLESS NICKEL 100-200 MICRO INCHES
3. CONNECTORS STAINLESS STEEL, PASSIVATED
6. ESTIMATED WEIGHT 23.7 GRAMS
7. DIMENSIONS IN BRACKETS ARE METRIC EQUIVALENT.

UNLESS OTHERWISE SPECIFIED DIMENSIONS ARE IN INCHES TOLERANCES ON	NAME	DATE	 100 Davids Drive, Hauppauge, New York 11788		
	DWN <i>R. Scherer</i>	11/17/09			
DECIMAL .X ±0.1 [2.5] DECIMAL .XX ±0.01 [0.25] DECIMAL .XXX ±0.005 [0.13] ANGLES X° ±30'	DFT DGN		SMPN-1 AMPLIFIER SMA IN AND OUT SSMA DC OUTLINE		
PROJ ENGR <i>J. Buonaiuto</i>	04/08/10				
 ESD SENSITIVE COMPONENT	MFG ENGR		SIZE	CODE IDENT. NO.	REV
	Q.C.		A	33592	B
	CUST		192605		
		SCALE	PROJECT	SHEET	OF 1