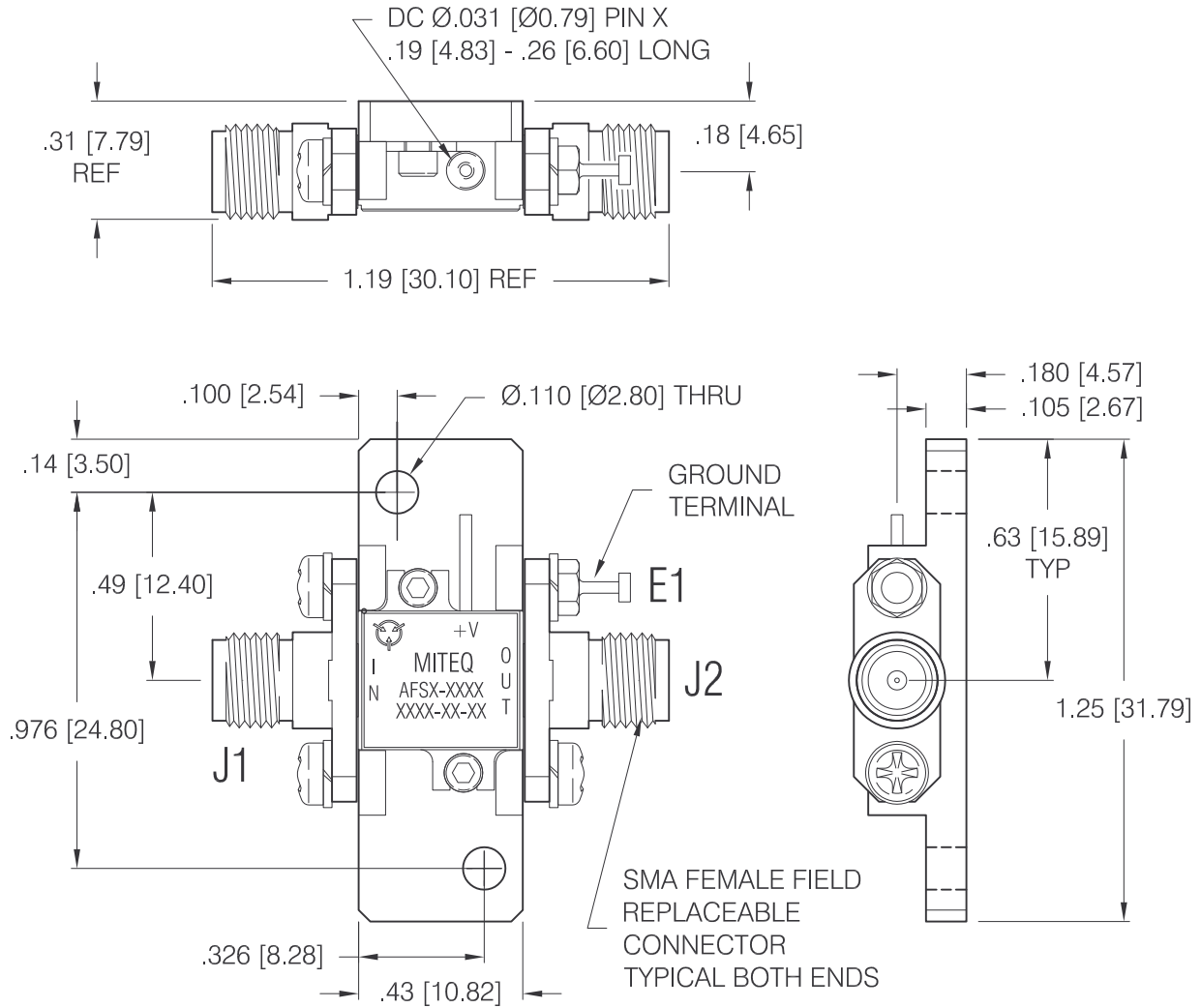




DASH NO.	APPLICATION		REVISIONS			
	NEXT ASSY	USED ON	LTR	DESCRIPTION	DATE	APPROVED
		189927	B	Incorporate ECN 13385 rem 2 mtg holes	09/01/09	<i>F. Shekarabi</i>



NOTES:

1. DIMENSIONS IN BRACKETS ARE METRIC EQUIVALENTS. SEE LEGEND

2. MARKING MAY VARY AS PER CUSTOMER SPECIFICATIONS.

UNLESS OTHERWISE SPECIFIED DIMENSIONS ARE IN INCHES TOLERANCES ON	NAME	DATE	 100 Davids Drive, Hauppauge, New York 11788			
	DWN BY <i>R. Scherer</i>	06/11/09				
DECIMAL .X ±0.1 [2.5] DECIMAL .XX ±0.01 [0.25] DECIMAL .XXX ±0.005 [0.13] ANGLES X° ±30'	CHK BY <i>F. Shekarabi</i>	09/01/09	AFS2 SERIES AMPLIFIER WITH CUSTOM FIXTURE OUTLINE			
	PROJ ENGR <i>J. Buonaiuto</i>	09/01/09				
	SECT HEAD		SIZE	CODE IDENT. NO.	189926	REV
	Q.C.		A	33592		B
	CUST		SCALE	PROJECT	SHEET	1 OF 1