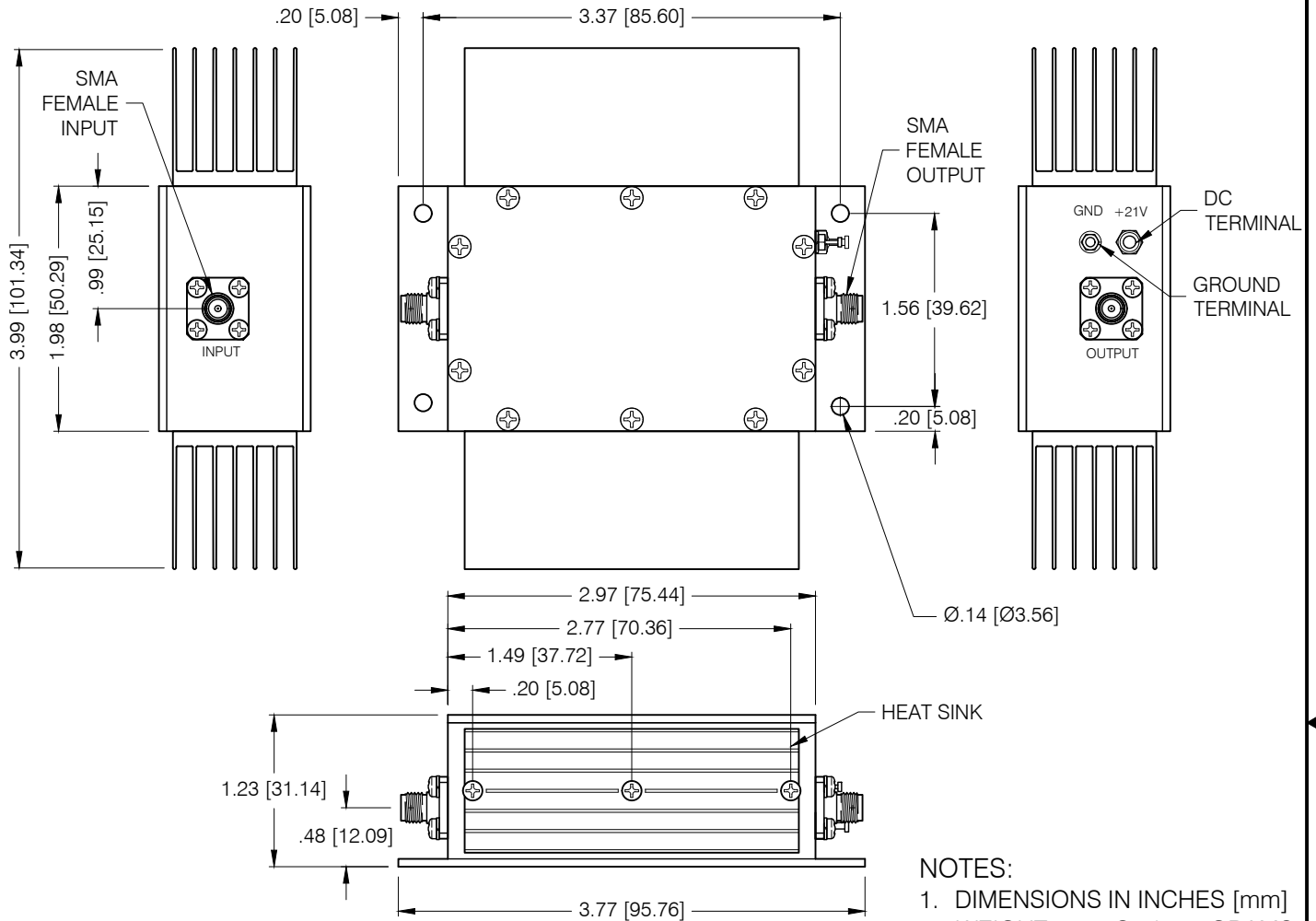


DASH NO.	APPLICATION		REVISIONS			
	NEXT ASSY	USED ON	LTR	DESCRIPTION	DATE	APPROVED
			C	Incorporate ECN 36080	06/15/16	L. Kammer

PRINT NOT ON AUTOMATIC DISTRIBUTION VERIFY REVISION PRIOR TO USE




- NOTES:
1. DIMENSIONS IN INCHES [mm]
  2. WEIGHT = 11 Oz / 312 GRAMS

OUTLINE #13



THESE ITEM(S)/TECHNOLOGY CONTAIN INFORMATION SUBJECT TO U.S. GOVERNMENT EXPORT CONTROL IN ACCORDANCE WITH THE EXPORT ADMINISTRATION REGULATIONS (EAR), 15 CFR PARTS 730-744. EXPORT OF THIS DATA TO ANY FOREIGN COUNTRY OR DISCLOSURE OF THIS DATA TO ANY NON-US PERSON MAY BE A VIOLATION OF FEDERAL LAW.

**Narda-MITEQ PROPRIETARY**

THIS DOCUMENT CONTAINS INFORMATION WHICH IS PROPRIETARY TO Narda-MITEQ. THE CONTENTS SHALL NOT BE DISCLOSED, COPIED, DISTRIBUTED, OR USED UNLESS AUTHORIZED BY AN OFFICER OF Narda-MITEQ. UNLESS



HEAT SINKS ARE REMOVABLE IF AMPLIFIER IS TO BE MOUNTED TO A LARGER HEATSINK  
DO NOT OPERATE AMPLIFIER WITHOUT HEATSINK

UNLESS OTHERWISE SPECIFIED DIMENSIONS ARE IN INCHES TOLERANCES ON	NAME	DATE
	DECIMAL .X ±0.1 [2.5] DECIMAL .XX ±0.01 [0.25] DECIMAL .XXX ±0.005 [0.13] ANGLES X° ±30'	DWN <i>L. Kammer</i>
	DFT DES <i>L. Kammer</i>	07/25/16
	PROJ ENGR <i>B. Bengert</i>	05/11/17
PROJECTION 	MFG ENGR	
	Q.C.	
	CUST	

**narda MITEQ**

435 MORELAND RD HAUPPAUGE, NY 11788

**POWER AMPLIFIER  
1 WATT  
OUTLINE**

SIZE <b>A</b>	CODE IDENT. NO. <b>99899</b>	<b>176601</b>	REV <b>C</b>
SCALE	PROJECT	SHEET 1 OF 1	