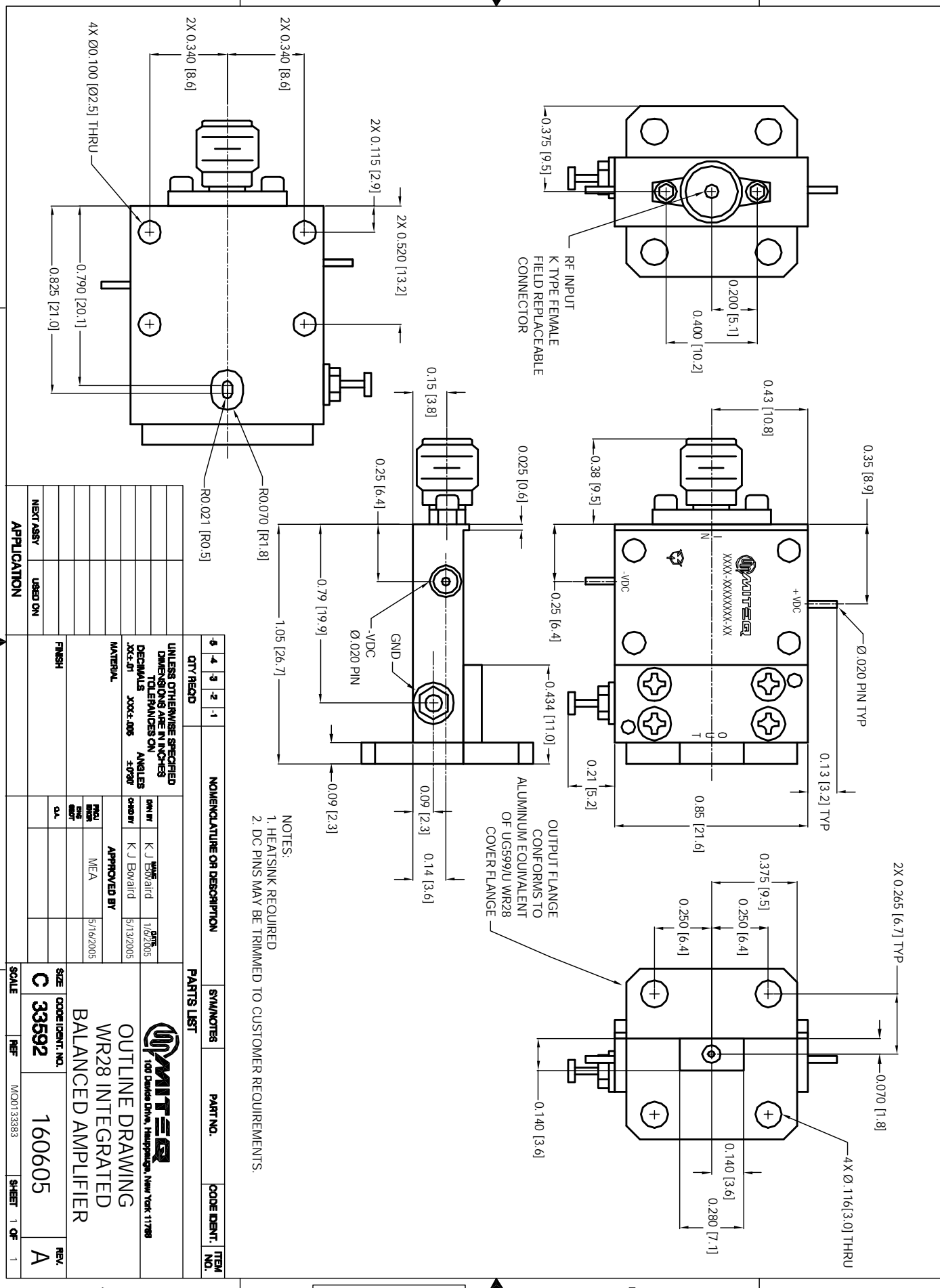


| REVISIONS | | DATE | APPROVED |
|-----------|-----------------|-----------|-----------|
| ZONE | LTR | | |
| A | INITIAL RELEASE | 9/16/2006 | J. Bivard |



NOTES:
 1. HEATSINK REQUIRED
 2. DC PINS MAY BE TRIMMED TO CUSTOMER REQUIREMENTS.

| QTY FIELD | | NOMENCLATURE OR DESCRIPTION | | PARTS LIST | |
|--|---|-----------------------------|---|------------|---|
| 3 | 4 | 1 | 2 | 3 | 4 |
| UNLESS OTHERWISE SPECIFIED DIMENSIONS ARE IN INCHES DECIMALS ARE ROUNDED UP ANGLES ARE SHOWN | | | | | |
| MATERIAL | | APPROVED BY | | DATE | |
| XXXX-XXXXXX-XX | | K J Bivard | | 5/16/2005 | |
| MECA | | K J Bivard | | 5/13/2005 | |
| FINISH | | DATE | | REV | |
| XXXX-XXXXXX-XX | | 5/16/2005 | | 1 | |
| APPLICATION | | SCALE | | SHEET | |
| USED ON | | C 33592 | | 1 OF 1 | |
| NEXT ASSY | | REF | | M00133383 | |

OUTLINE DRAWING
WR28 INTEGRATED
BALANCED AMPLIFIER

160605

160605