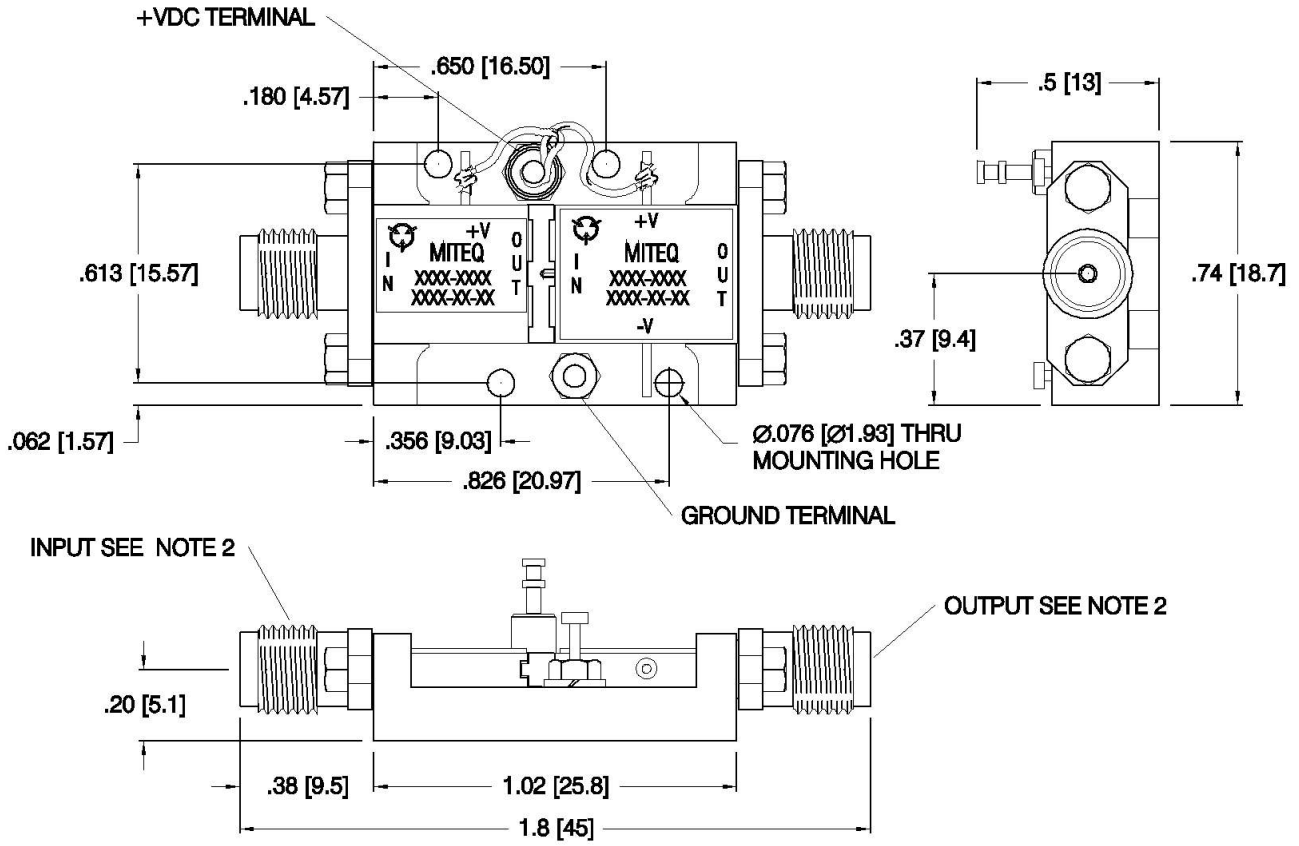


| DASH NO. | APPLICATION | | REVISIONS | | | |
|----------|-------------|---------|-----------|-----------------------|----------|------------------|
| | NEXT ASSY | USED ON | LTR | DESCRIPTION | DATE | APPROVED |
| | | | C | Incorporate ECN 26975 | 04/19/13 | <i>RiPcherer</i> |



- NOTES:**
- DIMENSIONS IN BRACKETS ARE MILLIMETER EQUIVALENTS, TOLERANCES AS FOLLOWS
 .XX = ±.01 [.XX = ± .25mm]
 .XXX = ±.005 [.XXX = ±.13mm]
 - OPTIONAL SERIES AND GENDER FOR INPUT AND OUTPUT FIELD REPLACEABLE CONNECTORS

| | | | | | | |
|--|-------------------------|----------|---|-----------------|--------|-----|
| UNLESS OTHERWISE SPECIFIED DIMENSIONS ARE IN INCHES TOLERANCES ON DECIMAL .X ±0.1 DECIMAL .XX ±0.01 DECIMAL .XXX ±0.005 ANGLES X° ±30° | NAME | DATE | 100 Davids Drive, Hauppauge, New York 11788 | | | |
| | DWN BY <i>E. Marty</i> | 03/05/02 | | | | |
| | CHK BY <i>RiPcherer</i> | 04/19/13 | JSA-JP MODULE CASCADED OUTLINE | | | |
| PROJ ENGR <i>J. Decker</i> | 04/19/13 | | | | | |
| ESD SENSITIVE | SECT HEAD | | SIZE | CODE IDENT. NO. | | REV |
| | Q.C. | | A | 33592 | 144663 | C |
| | CUST | | SCALE | PROJECT | SHEET | OF |