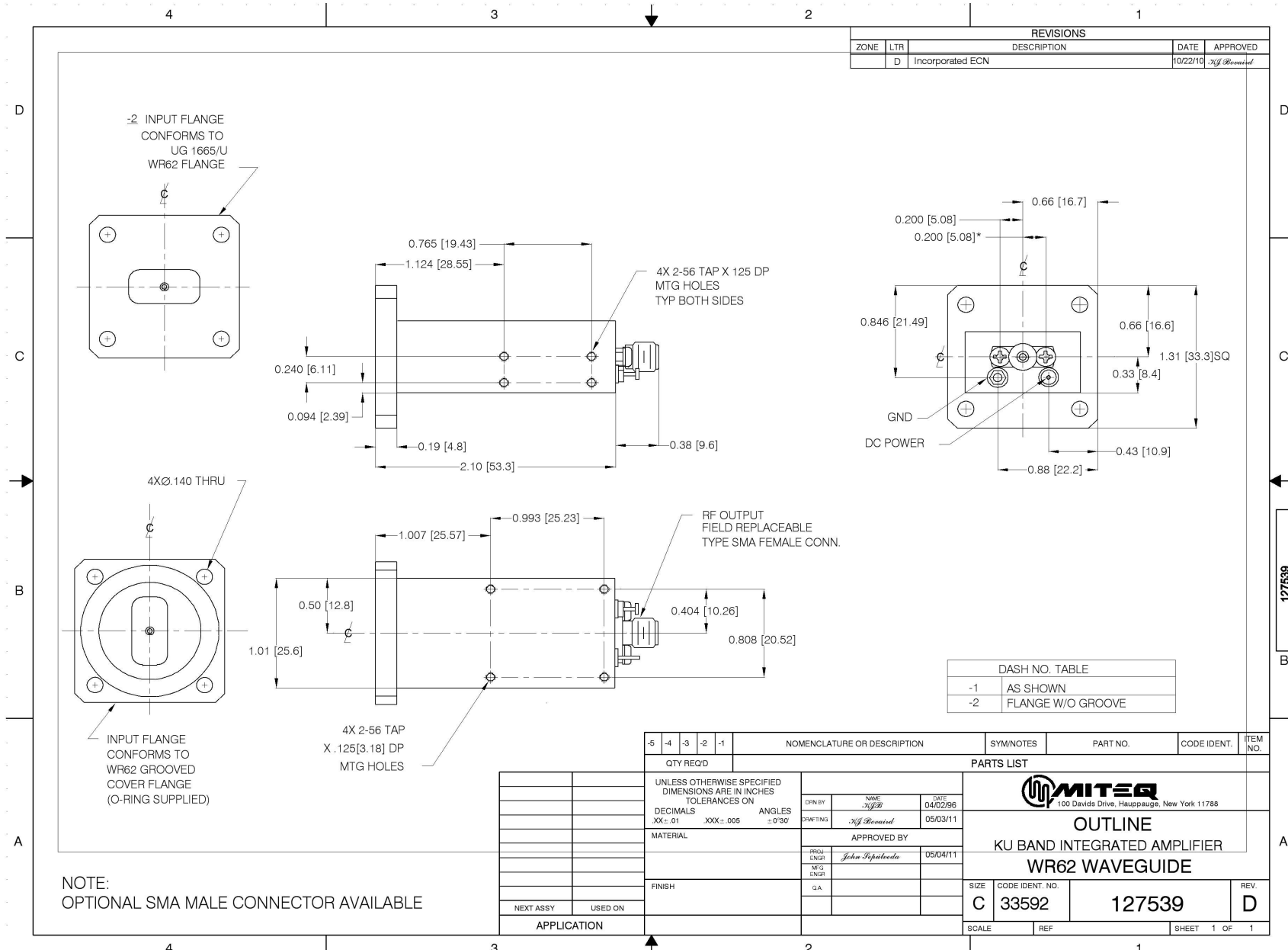


Current Revision

As of 5/4/2011 8:22:15 AM

DWALATA



REVISIONS				
ZONE	LTR	DESCRIPTION	DATE	APPROVED
D		Incorporated ECN	10/22/10	<i>J. B. Bessard</i>

DASH NO. TABLE	
-1	AS SHOWN
-2	FLANGE W/O GROOVE

-5	-4	-3	-2	-1	NOMENCLATURE OR DESCRIPTION	SYM/NOTES	PART NO.	CODE IDENT.	ITEM NO.
					PARTS LIST				
					UNLESS OTHERWISE SPECIFIED DIMENSIONS ARE IN INCHES TOLERANCES ON DECIMALS ANGLES XX ± .01 XXX ± .005 ± 0°30'				
					DRN BY	NAME	DATE	 100 Davids Drive, Hauppauge, New York 11788 OUTLINE KU BAND INTEGRATED AMPLIFIER WR62 WAVEGUIDE	
					DRAWING	<i>J. B. Bessard</i>	05/03/11		
					APPROVED BY				
					DRG. ENGR	<i>Johan Sepulveda</i>	05/04/11		
					MEG. ENGR				
					GA				
					FINISH			SIZE	REV.
					NEXT ASSY	USED ON		C	D
					APPLICATION			CODE IDENT. NO.	
								127539	
								SCALE	SHEET 1 OF 1
								REF	

NOTE:
OPTIONAL SMA MALE CONNECTOR AVAILABLE