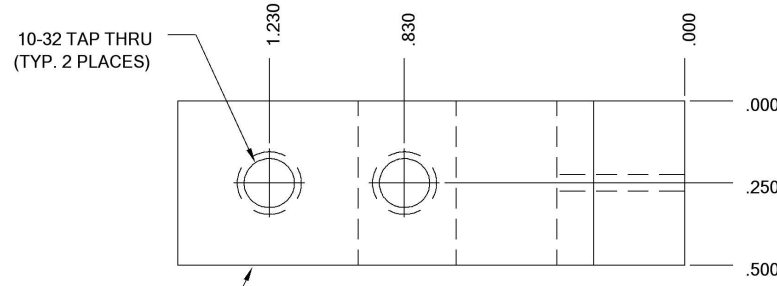
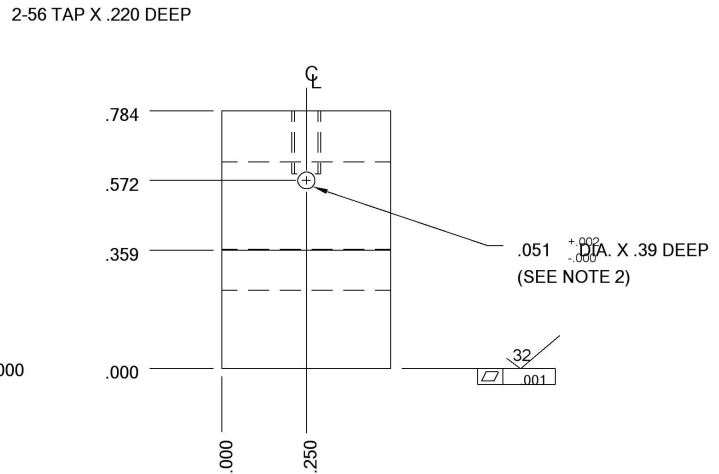
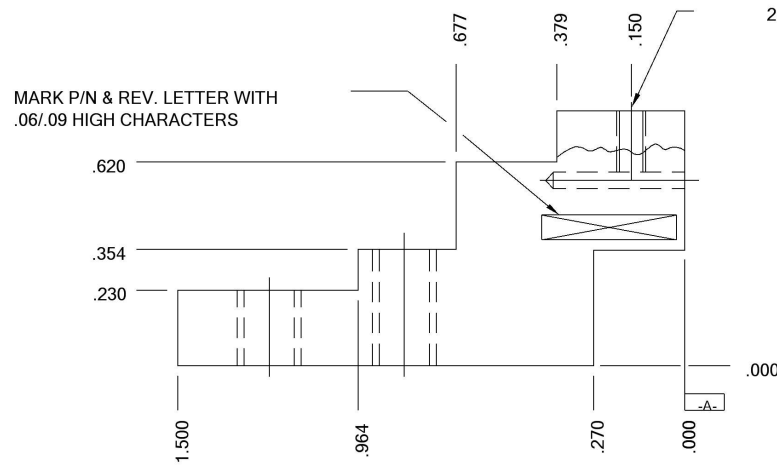


ZONE		REVISIONS		DATE	APPROVED
LTR		DESCRIPTION			
A		INITIAL RELEASE		03/94	



**CAUTION:** ALL DIMENSIONS, INCLUDING TAPPED HOLES, APPLY ONLY AFTER PLATING! - SEE NOTE 1 FOR FINISH

**NOTE:**

1. FINISH ALL DIMENSIONS ARE TAKEN AFTER PLATING.  
SODIUM ZINCATE ALL SURFACES, ELECTROLESS NICKEL PLATE .0002 - .0004 THICK.
2. .051 DIA. THRU HOLE TO BE TO DATUM WITHIN .001.

-5	-4	-3	-2	-1	NOMENCLATURE OR DESCRIPTION	SYM/NOTES	PART NO.	CODE IDENT.	ITEM NO.
QTY REQD					PARTS LIST				
UNLESS OTHERWISE SPECIFIED DIMENSIONS ARE IN INCHES TOLERANCES ON					 100 Davids Drive, Hauppauge, New York 11788				
DECIMALS XX±.01 ANGLES XXX±.005 #0°30'					DRN BY: _____ NAME: _____ DATE: _____ CHD BY: _____ APPROVED BY: _____ PROJ ENGR: _____ ENGR SECT: _____ D.A: _____				
MATERIAL					SIZE: C CODE IDENT. NO. 33592 REV.				
FINISH					SCALE REF SHEET OF				
HEAT TREAT									
NEXT ASSY USED ON APPLICATION									