



Features

- Low Insertion Loss
- Low VSWR
- Compact Size

Typical Applications

- Satellite Communications
- High Frequency Radars
- Millimeter Wave Wireless Communications
- Microwave Links

Electrical Specifications

		22-300A-xx-6R-6R-6R-6R				19-300A-xx-6R-6R-6R-6R			
Frequency Range	GHz	33-50				40-60			
WG Size		WR22				WR19			
Coupling	dB	30	40	50	30	40	50	30	40
Coupling Accuracy (Max.)	dB	±2	±2	±2	±2	±2	±2	±2	±2
VSWR Prim. (Typ.)		1.05	1.05	1.06	1.1	1.1	1.09	1.05	1.05
VSWR Prim. (Max.)		1.15	1.15	1.15	1.15	1.15	1.15	1.15	1.15
VSWR Sec. (Typ.)		1.05	1.05	1.05	1.1	1.1	1.09	1.05	1.05
VSWR Sec. (Max.)		1.15	1.15	1.15	1.15	1.15	1.15	1.15	1.15
Insertion Loss (Typ.)	dB	0.15	0.15	0.15	0.15	0.15	0.15	0.15	0.15
Insertion Loss (Max.)	dB	0.25	0.25	0.25	0.25	0.25	0.25	0.25	0.25
Directivity (Typ.)	dB	25	25	25	25	25	25	25	25
Directivity (Min.)	dB	18	18	18	18	18	18	18	18
Frequency Sensitivity (Max.)	dB	±1.5	±1.5	±1.5	±1.5	±1.5	±1.5	±1.5	±1.5
Maximum Input Power (Avg.)	W	Limited by waveguide size and user-selected termination maximum power.							

Ordering Information

XX-300A-XX-6R-6R-6R

Waveguide Size
22 = WR22
19 = WR19

Coupling Value
30 = 30dB
40 = 40dB
50 = 50dB
*Contact factory for other coupling values.

The material presented in this datasheet was current at the time of publication. Narda-MITEQ's continuing product improvement program makes it necessary to reserve the right to change our mechanical and electrical specifications without notice. If either of these parameters is critical, please contact the factory to verify that the information is current.

This material consists of Narda-MITEQ general capabilities information and does not contain controlled technical data as defined within the International Traffic in Arms (ITAR) Part 120.10 or Export Administration Regulations (EAR) Part 734.7-11. D-405/05.01.18

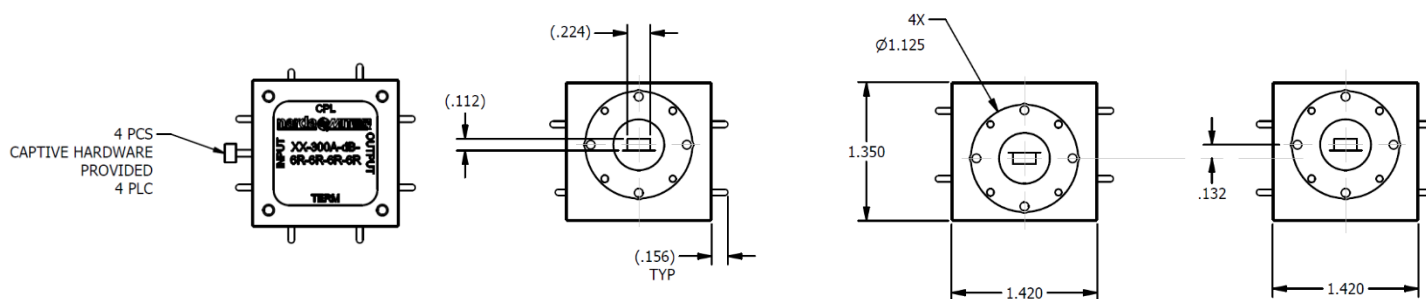



435 Moreland Road
Hauppauge, NY 11788
Tel : 631-231-1700
Fax : 631-231-1711

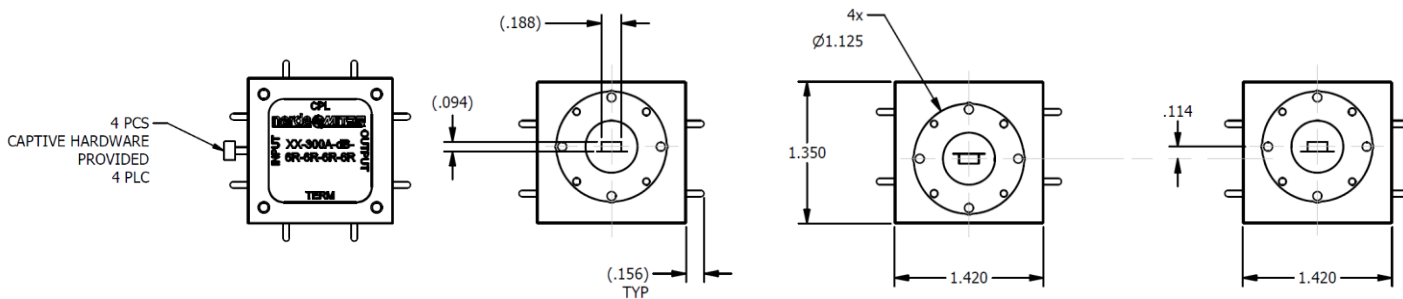
Email : componentsnm@nardamiteq.com
www.nardamiteq.com

Mechanical Specifications

	22-300A-xx-6R-6R-6R-6R	19-300A-xx-6R-6R-6R-6R
Weight	116 g [4.09 oz.]	115 g [4.06 oz.]
Flange Type	UG-383/U (MIL-DTL-3922/67C-006)	UG-383/U Modified (MIL-DTL-3922/67C-007)
Material	6061 Aluminum	6061 Aluminum
Plating	Gold Plating per ASTM B488 Type I, Code C, Class 0.75 Over Electroless Nickel per ASTM B733 Type IV, Class 5	Gold Plating per ASTM B488 Type I, Code C, Class 0.75 Over Electroless Nickel per ASTM B733 Type IV, Class 5



OUTLINE DRAWING - 22-300A-xx-6R-6R-6R



OUTLINE DRAWING - 19-300A-xx-6R-6R-6R

DIMENSIONS ARE IN INCHES.
TOLERANCES:
DECIMAL: .X±.1, .XX'.01, .XXX'.005
ANGLES: 0°-30°