

ACTIVE 2X FREQUENCY MULTIPLIER (CONT.)

MODEL: SYS2X2040

FEATURES

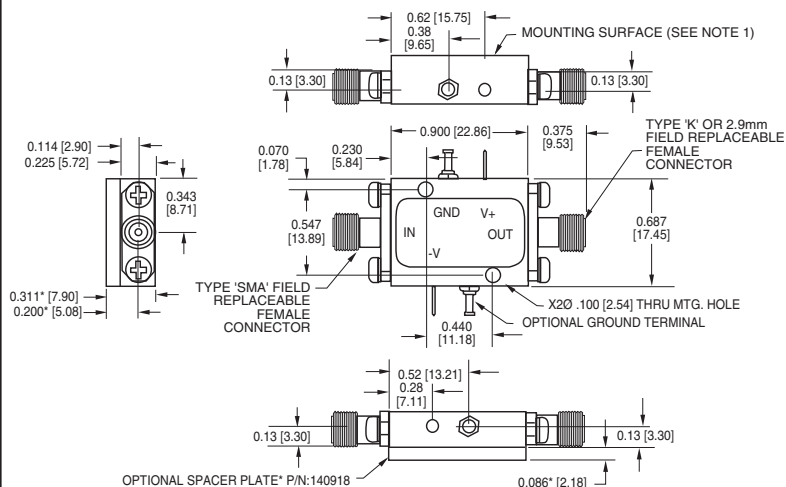
- RF input..... 10 to 20 GHz
- RF output 20 to 40 GHz
- Packaging Hermetically sealed

ELECTRICAL SPECIFICATIONS

INPUT PARAMETERS	CONDITION	UNITS	MIN.	TYP.	MAX.
RF frequency range		GHz	10		20
RF VSWR	50 ohm reference	Ratio		3:1	
RF power range		dBm	+9		+13
V+ bias voltage	@ 250 mA max.	VDC	9		16
V- bias voltage	@ 15 mA max.	VDC	-9		-16
TRANSFER CHARACTERISTICS	CONDITION	UNITS	MIN.	TYP.	MAX.
Output power		dBm	+12	+15	
Fundamental leakage	Input	dBc		-16	-5
OUTPUT PARAMETERS	CONDITION	UNITS	MIN.	TYP.	MAX.
RF frequency range		GHz	20		40
RF VSWR	50 ohm reference	Ratio		2.75:1	
RF power		dBm		+15	

NOTE: Test data supplied at 25°C;
fundamental rejection and output power.

OUTLINE DRAWING



- NOTES: 1. Unit's mounting surface shall be attached to a heatsink capable of dissipating the devices power consumption without exceeding the operating temperature limits.
2. All dimensions shown in brackets [] are in millimeters.

MAXIMUM RATINGS

Specification temperature..... +25°C
Operating temperature -40 to +65°C
Storage temperature..... -65 to +95°C

ADD SUFFIX TO MODEL NO.

S

OPTION

Single positive supply

