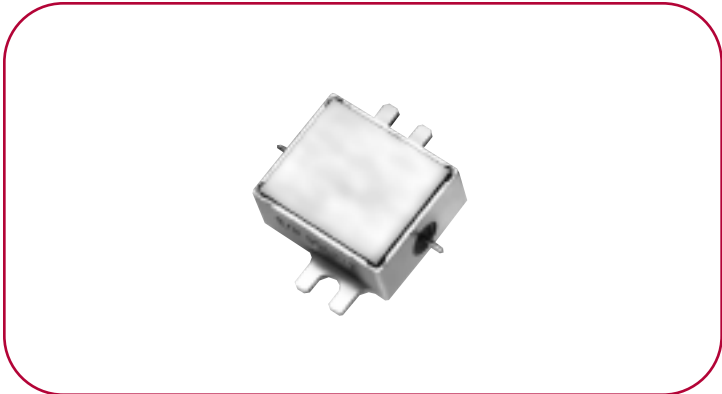


PASSIVE FREQUENCY DOUBLERS (CONT.)

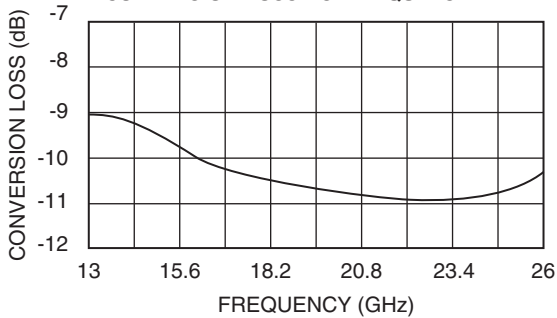
MODEL: MX2M130260

ELECTRICAL SPECIFICATIONS

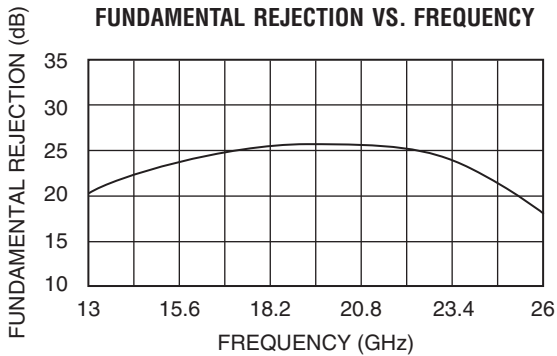
| | |
|------------------------|--------------------------------|
| Input frequency range | 6.5 – 13 GHz minimum |
| Output frequency range | 13 – 26 GHz minimum |
| Input power range | 8 – 12 dBm nominal |
| Conversion loss | 11 dB typical 13 dB maximum |
| Optional input power | |
| MX2J130260 | 3–8 dBm |
| MX2H130260 | 12–16 dBm |
| MX2V130260 | 16–20 dBm |
| Harmonic rejection | |
| Fundamental | 15 dB typical |
| Odd harmonic | 15 dB typical |



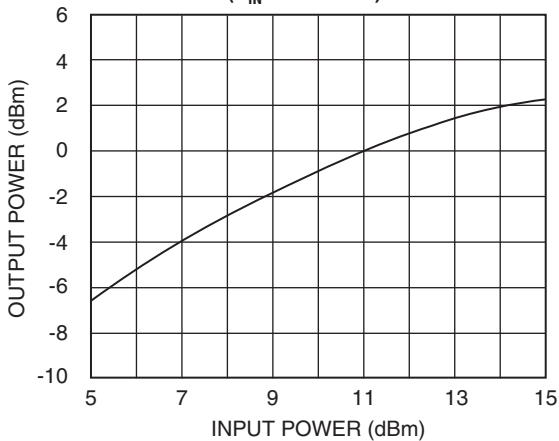
CONVERSION LOSS VS. FREQUENCY



FUNDAMENTAL REJECTION VS. FREQUENCY

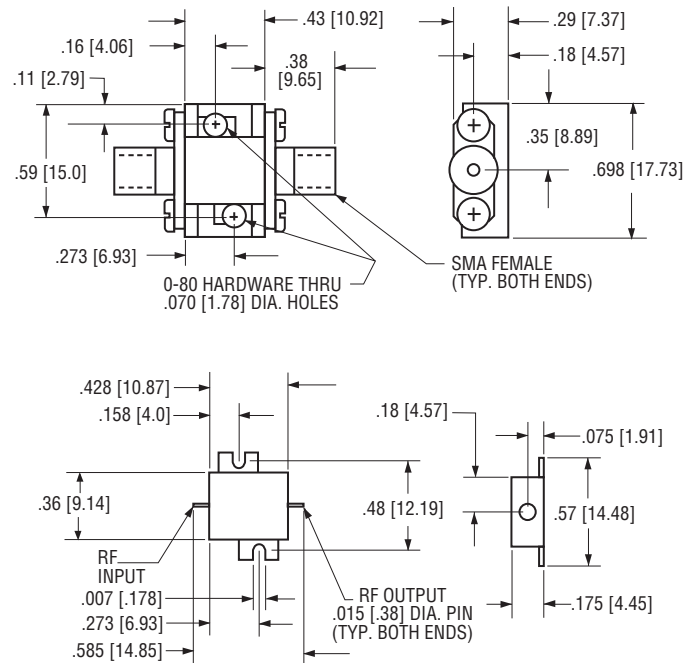


OUTPUT POWER VS. INPUT POWER ($P_{IN} = +10$ dBm)



OUTLINE DRAWING

MX2D



NOTES:

1. Doubler may be readily used as is, or as a drop-in by removing the SMA connectors and mounting hardware as shown.
2. All dimensions shown in brackets [] are in millimeters.