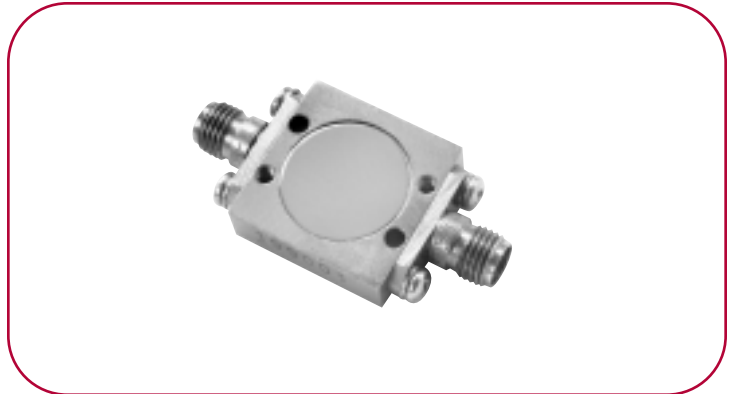


# PASSIVE FREQUENCY DOUBLERS (CONT.)

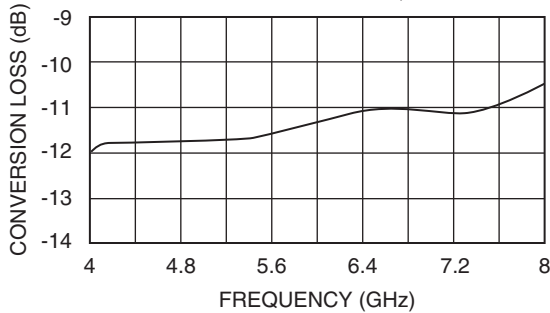
## MODEL: MX2M040080-2C

### ELECTRICAL SPECIFICATIONS

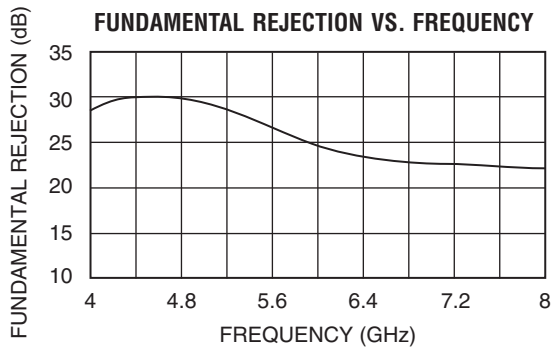
Input frequency range	2 – 4 GHz minimum
Output frequency range	4 – 8 GHz minimum
Input power range	8 – 12 dBm nominal
Conversion loss	11 dB typical 13 dB maximum
Optional input power	
MX2J040080-2C	3–8 dBm
MX2H040080-2C	12–16 dBm
MX2V040080-2C	16–20 dBm
Harmonic rejection	
Fundamental	20 dB typical
Odd harmonic	20 dB typical



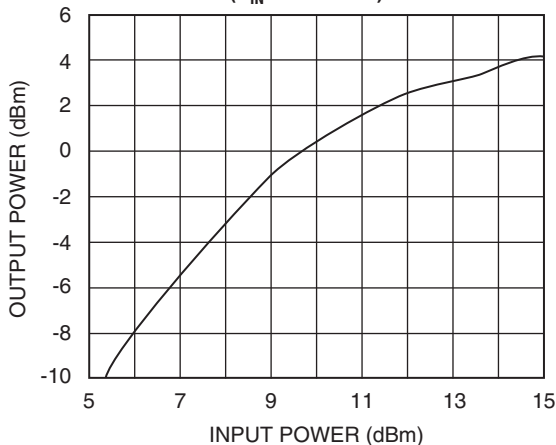
### CONVERSION LOSS VS. FREQUENCY



### FUNDAMENTAL REJECTION VS. FREQUENCY

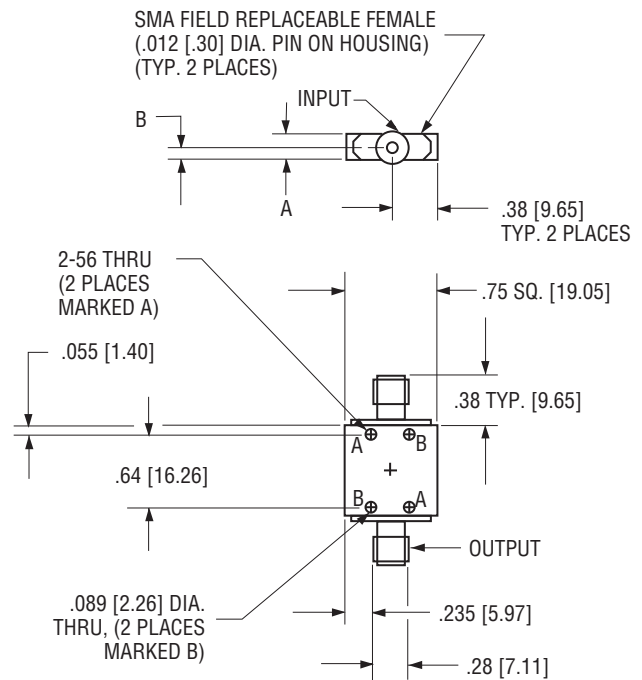


### OUTPUT POWER VS. INPUT POWER ( $P_{IN} = +10$ dBm)



### OUTLINE DRAWING

#### MX2C



OUTLINE DASH NO.	DIM A	DIM B
-1	.226 [5.74]	.121 [3.07]

NOTE:  
1. All dimensions shown in brackets [ ] are in millimeters.