

DETECTOR LOG VIDEO AMPLIFIERS

MODEL: FBLA SERIES

FEATURES

- Ultra-broadband units
- Logarithmic linearity ± 1.5 dB max.
- Temperature range -20 to +90°C
- 70 dB dynamic range

OPTIONS

- Customized center frequencies and frequency agility
- Extended environmental limits
- Military screening available



MODEL NUMBER	OPERATIONAL FREQUENCY RANGE (GHz)	INPUT DYNAMIC RANGE (dBm)	TANGENTIAL SENSITIVITY (dBm)	VIDEO FLATNESS (\pm dB)	RISE TIME (ns)	FALL TIME (ns)	RECOVERY TIME (ns)
STANDARD DYNAMIC RANGE							
FBLA-0.5/2.0-40AC	0.5 – 2	-40 to 0	-44	0.5	30	45	150
FBLA-2/4-40AC	2 – 4	-40 to 0	-44	0.5	30	45	150
FBLA-4/8-40AC	4 – 8	-40 to 0	-43	0.75	35	50	180
FBLA-8/12-40AC	8 – 12	-40 to 0	-43	1	35	50	180
EXTENDED DYNAMIC RANGE							
FBLA-0.1/1-70BC	0.1 – 1	-67 to +3	-70	1.5	40	120	350
FBLA-0.5/1.5-70BC	0.5 – 1.5	-67 to +3	-70	1.5	40	120	350
FBLA-1/2-70BC	1 – 2	-65 to +5	-68	1.5	40	120	350

ADDITIONAL SPECIFICATIONS

For standard and extended dynamic range DLVAs, linearity measured at center frequency and 25°C is ± 1 dB.

Add ± 0.5 dB over operating temperature of -40 to +85°C and ± 0.5 dB over operating bandwidth.

Logging slope for standard dynamic range DLVA is 100 mV/dB at center frequency and 25°C.

Logging slope for extended dynamic range DLVA is 15 mV/dB at center frequency and 25°C.

Slope variations of $\pm 5\%$ variation will occur over operating bandwidth.

An additional $\pm 5\%$ will occur over operating temperature of -40 to +85°C

Video output is DC coupled and rated into 93 Ω .

DC offset drift is ± 50 mV typical over operating temperature of -40 to +85°C.

Input VSWR < 2.0:1 typical from 0.1 to 4 GHz and < 2.5:1 from 4 to 12 GHz.

Power: ± 12 VDC at 100 mA typical for standard dynamic range and 200 mA typical for extended dynamic range.

ORDER OPTIONS

For ± 15 VDC, add suffix "C".

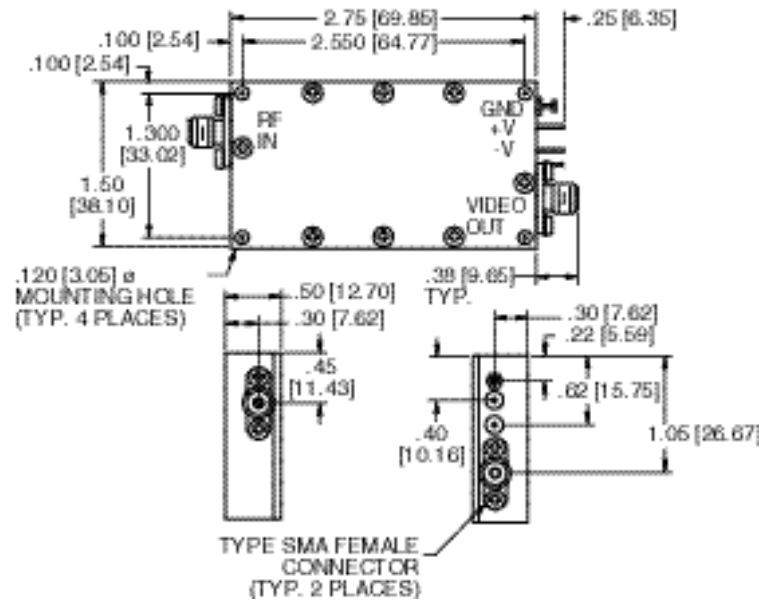
Typical part number: FBLA-0.1/1.0-70BC (for 'B' housing at ± 15 VDC).

NOTE: FOR MODIFICATION OF OUR STANDARD MODELS, PLEASE CONSULT FACTORY.

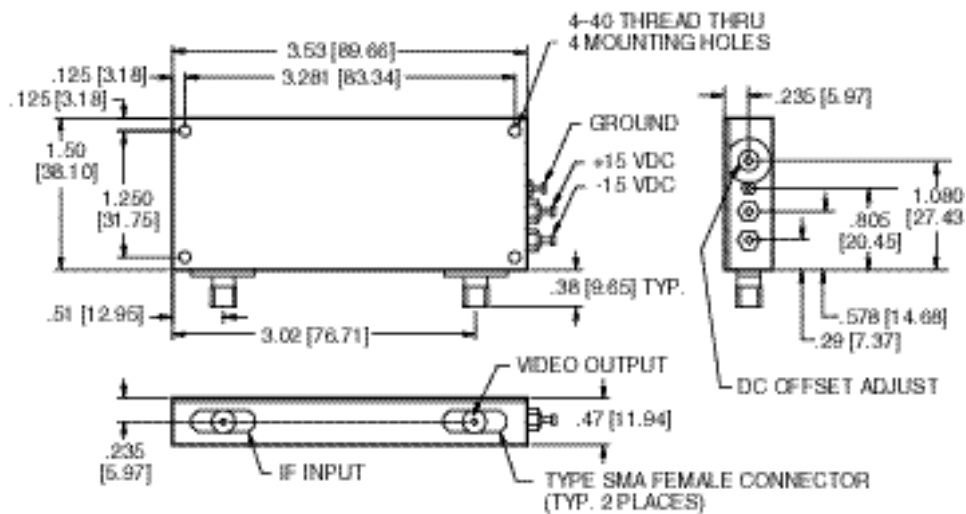


FBLA SERIES OUTLINE DRAWINGS

OUTLINE A



OUTLINE B



NOTE: DIMENSIONS SHOWN IN BRACKETS [] ARE IN MILLIMETERS.