

## HIGH POWER 500 WATT BIDIRECTIONAL COUPLERS

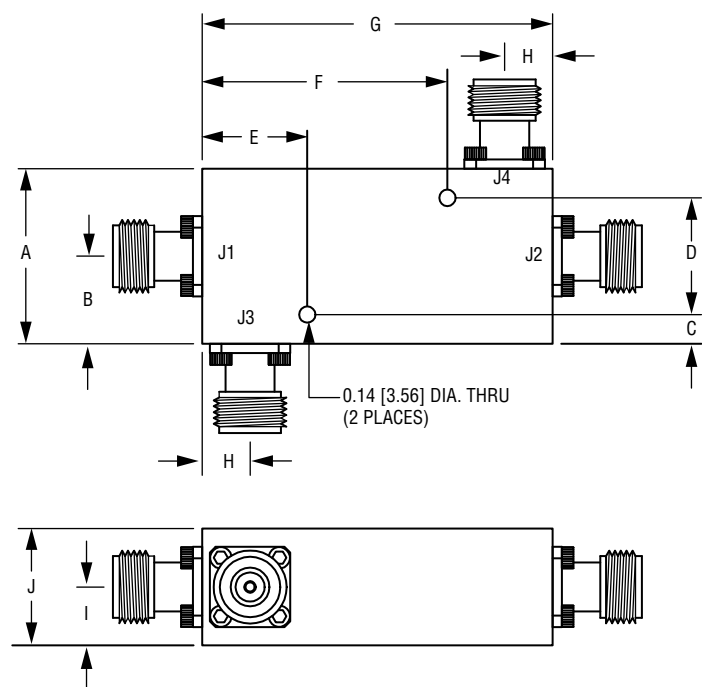
FREQ. (GHz)	MODEL NUMBER	COUPLING (dB)	FREQ. FLATNESS (±dB)	INSERTION LOSS (dB, Max.)	DIRECTIVITY (dB, Typ.)	VSWR (Max.)		POWER (Watts, Max.)			OUTLINE
						PRI. LINE	SEC. LINE	AVG. FORWARD	AVG. REVERSE	PEAK (kW)	
0.02–0.1	CD2-200-101-30N	30 ±0.5	0.75	0.3	25	1.15:1	Note 1	500	500	5	2
	CD2-200-101-40N	40 ±0.5	0.75	0.2	25	1.15:1	Note 1	500	500	5	2
0.1–0.5	CD2-101-501-30N	30 ±0.5	0.6	0.4	25	1.15:1	Note 1	500	500	5	1
	CD2-101-501-40N	40 ±0.5	0.6	0.3	25	1.15:1	Note 1	500	500	5	1
0.225–0.4	CD2-225-401-20N	20 ±0.5	0.25	0.3	25	1.15:1	1.2:1	500	500	5	1
	CD2-225-401-30N	30 ±0.5	0.25	0.25	25	1.15:1	1.2:1	500	500	5	1
	CD2-225-401-40N	40 ±0.5	0.25	0.2	25	1.15:1	1.2:1	500	500	5	1
0.4–1	CD2-401-102-20N	20 ±0.5	0.3	0.2	25	1.15:1	1.2:1	500	500	5	2
	CD2-401-102-30N	30 ±0.5	0.3	0.2	25	1.15:1	1.2:1	500	500	5	2
	CD2-401-102-40N	40 ±0.5	0.3	0.2	25	1.15:1	1.2:1	500	500	5	2
0.8–1.6	CD2-801-162-20N	20 ±0.5	0.3	0.2	22	1.15:1	1.2:1	500	500	5	2
	CD2-801-162-30N	30 ±0.5	0.3	0.2	24	1.15:1	1.2:1	500	500	5	2
	CD2-801-162-40N	40 ±0.5	0.3	0.2	24	1.15:1	1.2:1	500	500	5	2
1–2	CD2-102-202-20N	20 ±0.5	0.75	0.2	22	1.15:1	1.2:1	500	500	5	1
	CD2-102-202-30N	30 ±0.5	0.75	0.2	24	1.15:1	1.2:1	500	500	5	1
	CD2-102-202-40N	40 ±0.5	0.75	0.2	25	1.15:1	1.2:1	500	500	5	1
2–4	CD2-202-402-20N	20 ±0.5	0.75	0.2	22	1.15:1	1.2:1	500	500	5	1
	CD2-202-402-30N	30 ±0.5	0.75	0.2	22	1.15:1	1.2:1	500	500	5	1
	CD2-202-402-40N	40 ±0.5	0.75	0.2	22	1.15:1	1.2:1	500	500	5	1
0.2–5.2	CD2-201-522-20N	20 ±1	1.5	0.5	18	1.25:1	1.25:1	500	500	5	2
	CD2-201-522-30N	30 ±1	1.5	0.5	18	1.25:1	1.25:1	500	500	5	2
	CD2-201-522-40N	40 ±1	1.5	0.5	18	1.25:1	1.25:1	500	500	5	2

See outline drawings on pages 37 and 38.

### NOTES:

1. Coupled ports on these models use a compensation network which has a poor VSWR. These units are matched and aligned for use in a 50 ohm impedance system.
2. Standard connectors are type "N" female on all ports. Other connectors are available upon request. (Consult factory for power rating)
3. High power terminations are internal to all units except the 0.2 – 5.2 GHz models.

# HIGH POWER 500 WATT BIDIRECTIONAL COUPLER OUTLINE DRAWING

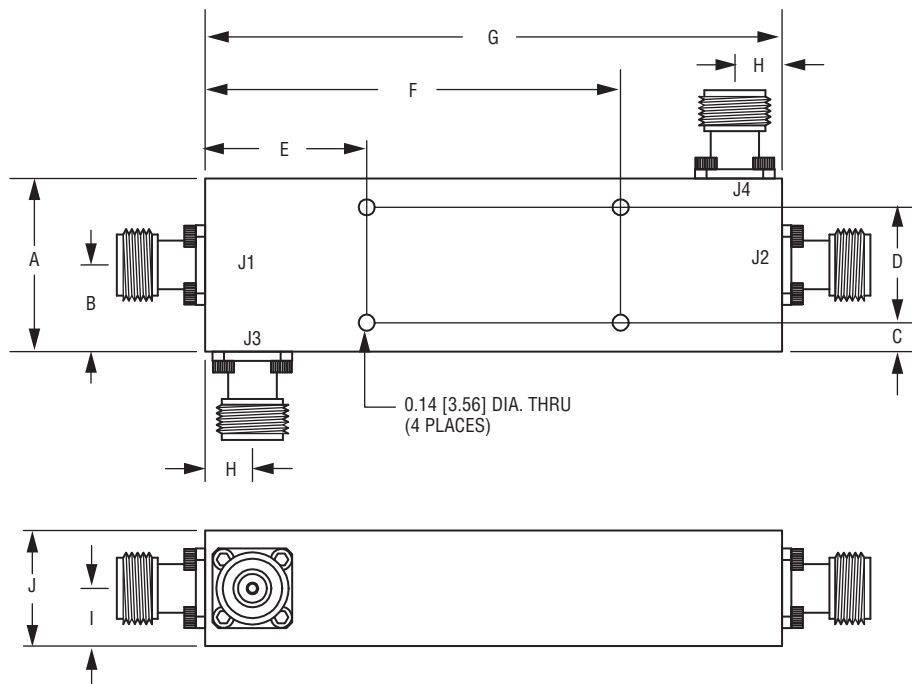


MODEL NUMBER	DIMENSION									
	A	B	C	D	E	F	G	H	I	J
<b>OUTLINE 1</b>										
CD2-101-501-30N	1.80	0.90	0.45	0.90	1.00	2.50	3.50	0.58	0.50	1.05
CD2-101-501-40N	[45.72]	[22.86]	[11.43]	[22.86]	[25.40]	[63.50]	[88.90]	[14.73]	[12.70]	[26.67]
CD2-225-401-20N	1.375	0.688	0.25	0.875	1.00	2.50	3.50	0.65	0.56	1.12
CD2-225-401-30N	[34.925]	[17.475]	[6.35]	[22.225]	[25.40]	[63.50]	[88.90]	[16.51]	[14.22]	[28.45]
CD2-225-401-40N										
CD2-102-202-20N	1.80	0.90	0.30	1.20	1.00	2.50	3.50	0.58	0.50	1.05
CD2-102-202-30N	[45.72]	[22.86]	[7.62]	[30.48]	[25.40]	[63.50]	[88.90]	[14.73]	[12.70]	[26.67]
CD2-102-202-40N										
CD2-202-402-20N	1.00	0.50	0.15	0.70	0.15	1.85	2.00	0.45	0.27	0.55
CD2-202-402-30N	[25.40]	[12.70]	[3.81]	[17.78]	[3.81]	[46.99]	[50.80]	[11.43]	[6.86]	[13.97]
CD2-202-402-40N										

NOTE: DIMENSIONS SHOWN IN BRACKETS [ ] ARE IN MILLIMETERS.



# HIGH POWER 500 WATT BIDIRECTIONAL COUPLER OUTLINE DRAWING



MODEL NUMBER	DIMENSION									
	A	B	C	D	E	F	G	H	I	J
<b>OUTLINE 2</b>										
CD2-200-101-30N	1.375	0.688	0.25	0.875	1.50	6.00	7.50	0.55	0.575	1.16
CD2-200-101-40N	[34.925]	[17.475]	[6.35]	[22.225]	[38.10]	[152.40]	[190.50]	[13.97]	[14.605]	[29.46]
CD2-401-102-20N	2.50	1.28	0.25	1.89	2.10	5.10	7.20	0.51	0.50	1.10
CD2-401-102-30N	[63.50]	[32.51]	[6.35]	[48.01]	[53.34]	[129.54]	[182.88]	[12.95]	[12.70]	[27.94]
CD2-401-102-40N										
CD2-801-162-20N	1.60	0.805	0.40	0.80	1.50	4.00	5.50	0.67	0.51	1.05
CD2-801-162-30N	[40.64]	[20.447]	[10.16]	[20.32]	[38.10]	[101.60]	[139.70]	[17.02]	[12.95]	[26.67]
CD2-801-162-40N										
CD2-201-522-20N	1.60	0.805	0.40	0.80	1.50	4.00	5.50	0.67	0.51	1.05
CD2-201-522-30N	[40.64]	[20.447]	[10.16]	[20.32]	[38.10]	[101.60]	[139.70]	[17.02]	[12.95]	[26.67]
CD2-201-522-40N										

NOTE: DIMENSIONS SHOWN IN BRACKETS [ ] ARE IN MILLIMETERS.

