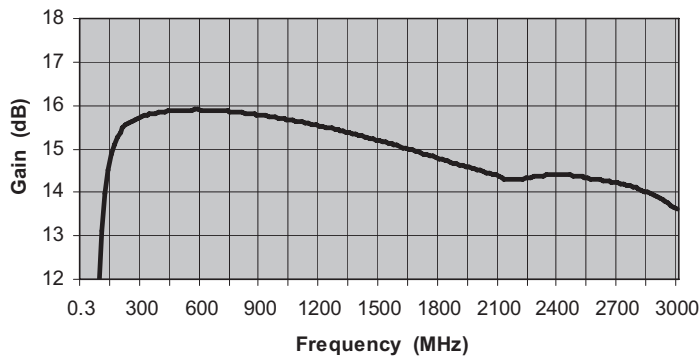


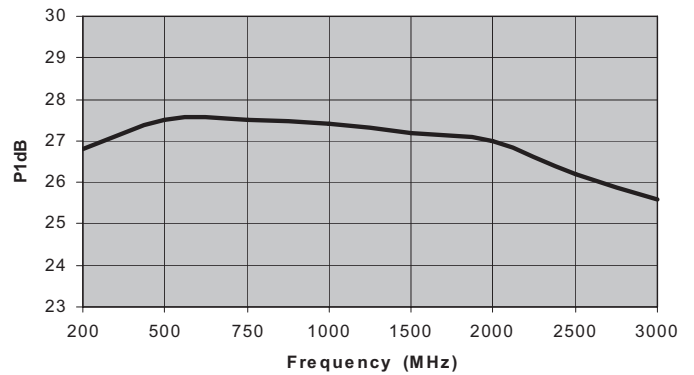
MITEQ AM-1635 SERIES AMPLIFIER

FREQUENCY (MHz)	MODEL NUMBER	GAIN (dB) (Min.)	VAR. (\pm dB) (Max.)	VSWR (Max.)	IMPED. IN/OUT (Ohms)	NOISE FIGURE (dB, Typ.)	P1 dB (dBm) (Typ.)	VOLTS	NOM. DC POWER (mA)	OUTLINE NO.
200-1000	AM-1635-1000	14	0.5	2.0:1	50/50	3.3	27	15	235	7H
200-2000	AM-1635-2000	13	0.75	2.2:1	50/50	3.4	27	15	235	7H
200-2500	AM-1635-2500	13	1	2.2:1	50/50	3.5	27	15	235	7H
200-3000	AM-1635-3000	12	1.75	2.2:1	50/50	3.6	26	15	235	7H

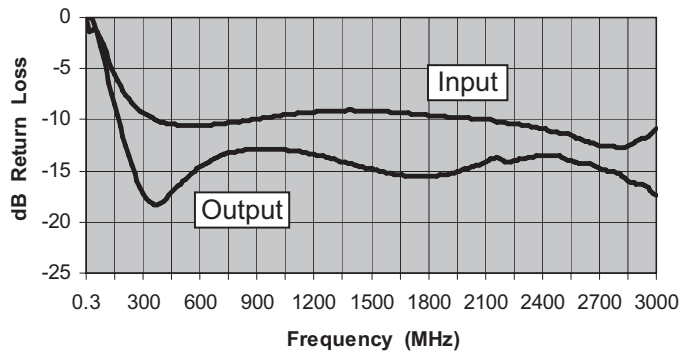
Gain (dB)



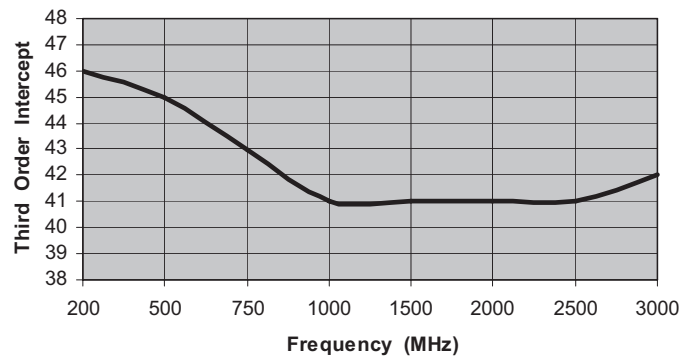
Output -1dB Gain Compression (+dBm)



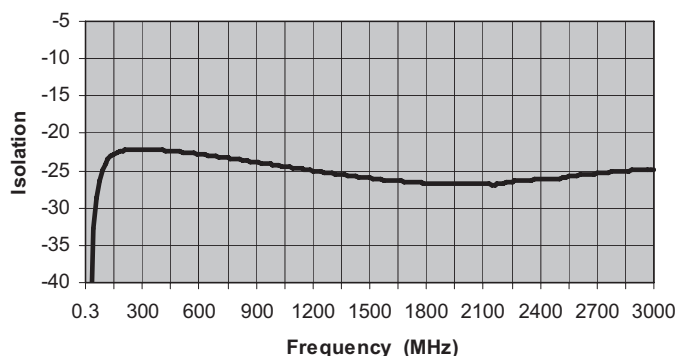
Input & Output Return Loss (dBRL)



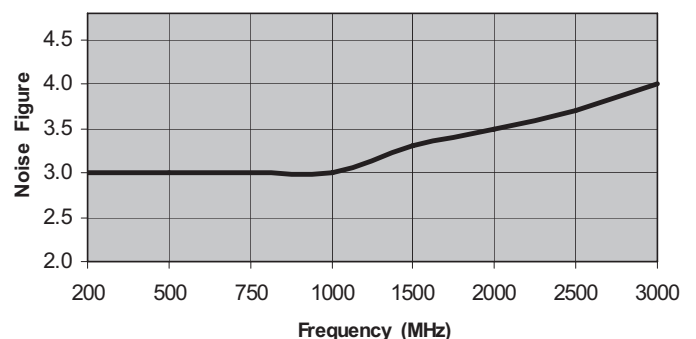
Output Third Order Intercept Point (+dBm)



Reverse Isolation (dB)



Noise Figure (dB)



ISO 9001:2000 Certified • General Information • Warranty



100 Davids Drive, Hauppauge, NY 11788
 TEL.: (631) 439-9220 • FAX: (631) 436-7430
 e-mail: components@miteq.com • www.miteq.com

MITEQ AM-1635 SERIES AMPLIFIER

Freq. (MHz)	Gain (dB)
90	11.6
105	13.1
120	14.0
135	14.5
150	14.9
165	15.1
180	15.3
195	15.4
210	15.5
225	15.5
240	15.6
255	15.6
270	15.7
285	15.7
300	15.7
315	15.8
330	15.8
345	15.8
360	15.8
375	15.8
390	15.8
405	15.8
420	15.9
435	15.9
450	15.9
465	15.9
480	15.9
495	15.9
510	15.9
525	15.9
540	15.9
555	15.9
570	15.9
585	15.9
600	15.9
615	15.9
630	15.9
645	15.9
660	15.9
675	15.9
690	15.9
705	15.9
720	15.9
735	15.9
750	15.9
765	15.9
780	15.8
795	15.8
810	15.8
825	15.8
840	15.8
855	15.8
870	15.8
885	15.8
900	15.8
915	15.8
930	15.8

Freq. (MHz)	Gain (dB)
945	15.7
960	15.7
975	15.7
990	15.7
1005	15.7
1020	15.7
1035	15.7
1050	15.7
1065	15.7
1080	15.6
1095	15.6
1110	15.6
1125	15.6
1140	15.6
1155	15.6
1170	15.6
1185	15.5
1200	15.5
1215	15.5
1230	15.5
1245	15.5
1260	15.5
1275	15.5
1290	15.4
1305	15.4
1320	15.4
1335	15.4
1350	15.4
1365	15.4
1380	15.3
1395	15.3
1410	15.3
1425	15.3
1440	15.3
1455	15.3
1470	15.2
1485	15.2
1500	15.2
1515	15.2
1530	15.2
1545	15.1
1560	15.1
1575	15.1
1590	15.1
1605	15.1
1620	15.0
1635	15.0
1650	15.0
1665	15.0
1680	15.0
1695	14.9
1710	14.9
1725	14.9
1740	14.9
1755	14.8
1770	14.8
1785	14.8

Freq. (MHz)	Gain (dB)
1800	14.8
1815	14.8
1830	14.7
1845	14.7
1860	14.7
1875	14.7
1890	14.7
1905	14.6
1920	14.6
1935	14.6
1950	14.6
1965	14.6
1980	14.5
1995	14.5
2010	14.5
2025	14.5
2040	14.5
2055	14.4
2070	14.4
2085	14.4
2100	14.4
2115	14.3
2130	14.3
2145	14.3
2160	14.3
2175	14.3
2190	14.3
2205	14.3
2220	14.3
2235	14.3
2250	14.3
2265	14.4
2280	14.4
2295	14.4
2310	14.4
2325	14.4
2340	14.4
2355	14.4
2370	14.4
2385	14.4
2400	14.4
2415	14.4
2430	14.4
2445	14.4
2460	14.4
2475	14.4
2490	14.4
2505	14.4
2520	14.4
2535	14.3
2550	14.3
2565	14.3
2580	14.3
2595	14.3
2610	14.3
2625	14.3
2640	14.3

Freq. (MHz)	Gain (dB)
2655	14.3
2670	14.2
2685	14.2
2700	14.2
2715	14.2
2730	14.2
2745	14.2
2760	14.1
2775	14.1
2790	14.1
2805	14.1
2820	14.1
2835	14.0
2850	14.0
2865	14.0
2880	13.9
2895	13.9
2910	13.9
2925	13.8
2940	13.8
2955	13.7
2970	13.7
2985	13.7
3000	13.6



100 Davids Drive, Hauppauge, NY 11788
TEL.: (631) 439-9220 • FAX: (631) 436-7430
e-mail: components@miteq.com • www.miteq.com

MITEQ AM-1635 SERIES AMPLIFIER

Freq. (MHz)	Input VSWR (dBRL)	Output VSWR (dBRL)
90	-3	-4
105	-3	-5
120	-4	-6
135	-5	-8
150	-6	-9
165	-6	-10
180	-7	-11
195	-7	-12
210	-8	-13
225	-8	-14
240	-8	-14
255	-9	-15
270	-9	-16
285	-9	-17
300	-9	-17
315	-10	-18
330	-10	-18
345	-10	-18
360	-10	-18
375	-10	-18
390	-10	-18
405	-10	-18
420	-10	-18
435	-10	-17
450	-10	-17
465	-10	-17
480	-11	-16
495	-11	-16
510	-11	-16
525	-11	-16
540	-11	-16
555	-11	-15
570	-11	-15
585	-11	-15
600	-11	-15
615	-11	-14
630	-11	-14
645	-10	-14
660	-10	-14
675	-10	-14
690	-10	-14
705	-10	-14
720	-10	-13
735	-10	-13
750	-10	-13
765	-10	-13
780	-10	-13
795	-10	-13
810	-10	-13
825	-10	-13
840	-10	-13
855	-10	-13
870	-10	-13
885	-10	-13
900	-10	-13
915	-10	-13
930	-10	-13
945	-10	-13
960	-10	-13
975	-10	-13
990	-10	-13
1005	-10	-13
1020	-10	-13

Freq. (MHz)	Input VSWR (dBRL)	Output VSWR (dBRL)
1035	-10	-13
1050	-10	-13
1065	-9	-13
1080	-9	-13
1095	-9	-13
1110	-9	-13
1125	-9	-13
1140	-9	-13
1155	-9	-13
1170	-9	-13
1185	-9	-13
1200	-9	-13
1215	-9	-13
1230	-9	-14
1245	-9	-14
1260	-9	-14
1275	-9	-14
1290	-9	-14
1305	-9	-14
1320	-9	-14
1335	-9	-14
1350	-9	-14
1365	-9	-14
1380	-9	-14
1395	-9	-14
1410	-9	-14
1425	-9	-14
1440	-9	-15
1455	-9	-15
1470	-9	-15
1485	-9	-15
1500	-9	-15
1515	-9	-15
1530	-9	-15
1545	-9	-15
1560	-9	-15
1575	-9	-15
1590	-9	-15
1605	-9	-15
1620	-9	-15
1635	-9	-15
1650	-9	-15
1665	-9	-15
1680	-9	-15
1695	-9	-16
1710	-9	-16
1725	-9	-16
1740	-9	-16
1755	-9	-16
1770	-9	-16
1785	-10	-16
1800	-10	-16
1815	-10	-16
1830	-10	-16
1845	-10	-15
1860	-10	-15
1875	-10	-15
1890	-10	-15
1905	-10	-15
1920	-10	-15
1935	-10	-15
1950	-10	-15
1965	-10	-15

Freq. (MHz)	Input VSWR (dBRL)	Output VSWR (dBRL)
1980	-10	-15
1995	-10	-15
2010	-10	-15
2025	-10	-15
2040	-10	-15
2055	-10	-15
2070	-10	-14
2085	-10	-14
2100	-10	-14
2115	-10	-14
2130	-10	-14
2145	-10	-14
2160	-10	-14
2175	-10	-14
2190	-10	-14
2205	-10	-14
2220	-10	-14
2235	-10	-14
2250	-10	-14
2265	-10	-14
2280	-10	-14
2295	-10	-14
2310	-11	-14
2325	-11	-14
2340	-11	-14
2355	-11	-14
2370	-11	-14
2385	-11	-13
2400	-11	-13
2415	-11	-13
2430	-11	-13
2445	-11	-13
2460	-11	-13
2475	-11	-13
2490	-11	-14
2505	-11	-14
2520	-11	-14
2535	-11	-14
2550	-12	-14
2565	-12	-14
2580	-12	-14
2595	-12	-14
2610	-12	-14
2625	-12	-14
2640	-12	-14
2655	-12	-14
2670	-12	-14
2685	-12	-15
2700	-13	-15
2715	-13	-15
2730	-13	-15
2745	-13	-15
2760	-13	-15
2775	-13	-15
2790	-13	-15
2805	-13	-15
2820	-13	-15
2835	-13	-16
2850	-13	-16
2865	-12	-16
2880	-12	-16
2895	-12	-16
2910	-12	-16

Freq. (MHz)	Input VSWR (dBRL)	Output VSWR (dBRL)
2925	-12	-16
2940	-12	-16
2955	-12	-17
2970	-11	-17
2985	-11	-17
3000	-11	-17



100 Davids Drive, Hauppauge, NY 11788
 TEL.: (631) 439-9220 • FAX: (631) 436-7430
 e-mail: components@miteq.com • www.miteq.com

MITEQ AM-1635 SERIES AMPLIFIER

Freq. (MHz)	Reverse Isolation (dB)
90	-25
105	-24
120	-23
135	-23
150	-23
165	-23
180	-22
195	-22
210	-22
225	-22
240	-22
255	-22
270	-22
285	-22
300	-22
315	-22
330	-22
345	-22
360	-22
375	-22
390	-22
405	-22
420	-22
435	-22
450	-22
465	-22
480	-22
495	-22
510	-23
525	-23
540	-23
555	-23
570	-23
585	-23
600	-23
615	-23
630	-23
645	-23
660	-23
675	-23
690	-23
705	-23
720	-23
735	-23
750	-23
765	-23
780	-23
795	-23
810	-24
825	-24
840	-24
855	-24
870	-24
885	-24
900	-24
915	-24

Freq. (MHz)	Reverse Isolation (dB)
930	-24
945	-24
960	-24
975	-24
990	-24
1005	-24
1020	-24
1035	-24
1050	-24
1065	-24
1080	-25
1095	-25
1110	-25
1125	-25
1140	-25
1155	-25
1170	-25
1185	-25
1200	-25
1215	-25
1230	-25
1245	-25
1260	-25
1275	-25
1290	-25
1305	-25
1320	-25
1335	-25
1350	-26
1365	-26
1380	-26
1395	-26
1410	-26
1425	-26
1440	-26
1455	-26
1470	-26
1485	-26
1500	-26
1515	-26
1530	-26
1545	-26
1560	-26
1575	-26
1590	-26
1605	-26
1620	-26
1635	-26
1650	-26
1665	-26
1680	-26
1695	-27
1710	-27
1725	-27
1740	-27
1755	-27

Freq. (MHz)	Reverse Isolation (dB)
1770	-27
1785	-27
1800	-27
1815	-27
1830	-27
1845	-27
1860	-27
1875	-27
1890	-27
1905	-27
1920	-27
1935	-27
1950	-27
1965	-27
1980	-27
1995	-27
2010	-27
2025	-27
2040	-27
2055	-27
2070	-27
2085	-27
2100	-27
2115	-27
2130	-27
2145	-27
2160	-27
2175	-27
2190	-27
2205	-27
2220	-27
2235	-27
2250	-26
2265	-26
2280	-26
2295	-26
2310	-26
2325	-26
2340	-26
2355	-26
2370	-26
2385	-26
2400	-26
2415	-26
2430	-26
2445	-26
2460	-26
2475	-26
2490	-26
2505	-26
2520	-26
2535	-26
2550	-26
2565	-26
2580	-26
2595	-26

Freq. (MHz)	Reverse Isolation (dB)
2610	-26
2625	-26
2640	-26
2655	-25
2670	-25
2685	-25
2700	-25
2715	-25
2730	-25
2745	-25
2760	-25
2775	-25
2790	-25
2805	-25
2820	-25
2835	-25
2850	-25
2865	-25
2880	-25
2895	-25
2910	-25
2925	-25
2940	-25
2955	-25
2970	-25
2985	-25
3000	-25



MITEQ AM-1635 SERIES AMPLIFIER

Freq. (MHz)	Input VSWR (dBRL)	Output VSWR (dBRL)
90	-3	-4
105	-3	-5
120	-4	-6
135	-5	-8
150	-6	-9
165	-6	-10
180	-7	-11
195	-7	-12
210	-8	-13
225	-8	-14
240	-8	-14
255	-9	-15
270	-9	-16
285	-9	-17
300	-9	-17
315	-10	-18
330	-10	-18
345	-10	-18
360	-10	-18
375	-10	-18
390	-10	-18
405	-10	-18
420	-10	-18
435	-10	-17
450	-10	-17
465	-10	-17
480	-11	-16
495	-11	-16
510	-11	-16
525	-11	-16
540	-11	-16
555	-11	-15
570	-11	-15
585	-11	-15
600	-11	-15
615	-11	-14
630	-11	-14
645	-10	-14
660	-10	-14
675	-10	-14
690	-10	-14
705	-10	-14
720	-10	-13
735	-10	-13
750	-10	-13
765	-10	-13
780	-10	-13
795	-10	-13
810	-10	-13
825	-10	-13
840	-10	-13
855	-10	-13
870	-10	-13
885	-10	-13
900	-10	-13
915	-10	-13
930	-10	-13
945	-10	-13
960	-10	-13
975	-10	-13
990	-10	-13
1005	-10	-13
1020	-10	-13

Freq. (MHz)	Input VSWR (dBRL)	Output VSWR (dBRL)
1035	-10	-13
1050	-10	-13
1065	-9	-13
1080	-9	-13
1095	-9	-13
1110	-9	-13
1125	-9	-13
1140	-9	-13
1155	-9	-13
1170	-9	-13
1185	-9	-13
1200	-9	-13
1215	-9	-13
1230	-9	-14
1245	-9	-14
1260	-9	-14
1275	-9	-14
1290	-9	-14
1305	-9	-14
1320	-9	-14
1335	-9	-14
1350	-9	-14
1365	-9	-14
1380	-9	-14
1395	-9	-14
1410	-9	-14
1425	-9	-14
1440	-9	-15
1455	-9	-15
1470	-9	-15
1485	-9	-15
1500	-9	-15
1515	-9	-15
1530	-9	-15
1545	-9	-15
1560	-9	-15
1575	-9	-15
1590	-9	-15
1605	-9	-15
1620	-9	-15
1635	-9	-15
1650	-9	-15
1665	-9	-15
1680	-9	-15
1695	-9	-16
1710	-9	-16
1725	-9	-16
1740	-9	-16
1755	-9	-16
1770	-9	-16
1785	-10	-16
1800	-10	-16
1815	-10	-16
1830	-10	-16
1845	-10	-15
1860	-10	-15
1875	-10	-15
1890	-10	-15
1905	-10	-15
1920	-10	-15
1935	-10	-15
1950	-10	-15
1965	-10	-15

Freq. (MHz)	Input VSWR (dBRL)	Output VSWR (dBRL)
1980	-10	-15
1995	-10	-15
2010	-10	-15
2025	-10	-15
2040	-10	-15
2055	-10	-15
2070	-10	-14
2085	-10	-14
2100	-10	-14
2115	-10	-14
2130	-10	-14
2145	-10	-14
2160	-10	-14
2175	-10	-14
2190	-10	-14
2205	-10	-14
2220	-10	-14
2235	-10	-14
2250	-10	-14
2265	-10	-14
2280	-10	-14
2295	-10	-14
2310	-11	-14
2325	-11	-14
2340	-11	-14
2355	-11	-14
2370	-11	-14
2385	-11	-13
2400	-11	-13
2415	-11	-13
2430	-11	-13
2445	-11	-13
2460	-11	-13
2475	-11	-13
2490	-11	-14
2505	-11	-14
2520	-11	-14
2535	-11	-14
2550	-12	-14
2565	-12	-14
2580	-12	-14
2595	-12	-14
2610	-12	-14
2625	-12	-14
2640	-12	-14
2655	-12	-14
2670	-12	-14
2685	-12	-15
2700	-13	-15
2715	-13	-15
2730	-13	-15
2745	-13	-15
2760	-13	-15
2775	-13	-15
2790	-13	-15
2805	-13	-15
2820	-13	-15
2835	-13	-16
2850	-13	-16
2865	-12	-16
2880	-12	-16
2895	-12	-16
2910	-12	-16

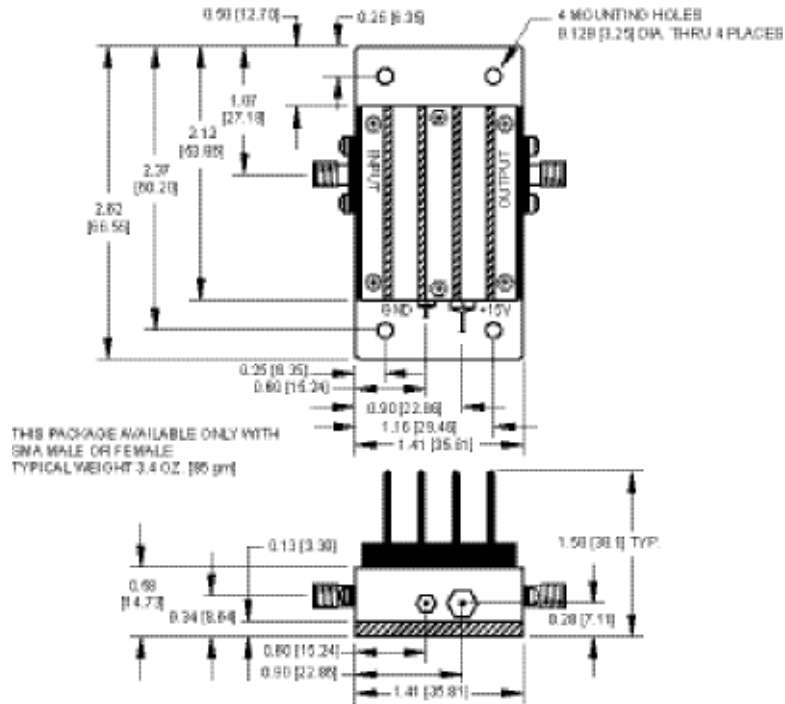
Freq. (MHz)	Input VSWR (dBRL)	Output VSWR (dBRL)
2925	-12	-16
2940	-12	-16
2955	-12	-17
2970	-11	-17
2985	-11	-17
3000	-11	-17



100 Davids Drive, Hauppauge, NY 11788
 TEL.: (631) 439-9220 • FAX: (631) 436-7430
 e-mail: components@miteq.com • www.miteq.com

MITEQ AM-1635 SERIES AMPLIFIER

OUTLINE 7H



NOTE: DIMENSIONS ARE IN INCHES [MILLIMETERS].

OPTIONS FOR BIPOLAR AMPLIFIERS

INPUT BIAS TEE

Add Suffix “-F”

Used to inject bias signal to photo diode or other type of device. Check for availability on your model before ordering. Available on most units operating above 1 MHz. Please contact MITEQ with your custom requirements.

BIAS THROUGH THE OUTPUT CONNECTOR

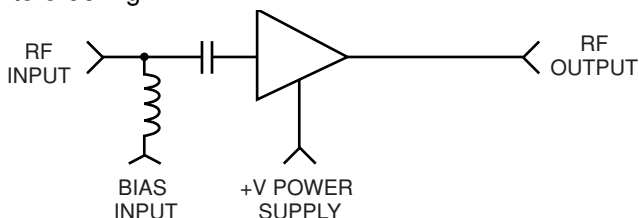
Add Suffix “-1306/E” or “-1306/D”

Used to supply operating power when the amplifier is remotely located while eliminating the need to run a separate DC line. Specify whether existing power pin should be “Enabled” or “Disabled.” To order, add -1306/E or -1306/D after model number. Example: AU-2A-0150-1306/E will have existing +15 V pin enabled so that it can be used as a test point. Use caution with this option since any voltage applied here will also be present on the RF output center pin. Available on most units operating above 1 MHz.

BIAS THROUGH THE OUTPUT CONNECTOR WITH DC FEEDTHROUGH TO RF INPUT

Add Suffix “-1334/E” or “-1334/D”

Used to supply operating power when the amplifier is remotely located and eliminates the need to run a separate DC line. This DC voltage is then internally fed to the RF input to power a remote LNA or other low power equipment. Maximum current of external load will vary with model type. Available on most units operating above 1 MHz. Please contact factory prior to ordering.



Specify whether existing power pin should be “Enabled” or “Disabled”. To order, add “-1334/E” or “-1334/D”

after model number. Example: AU-2A-0150-1334/E will have existing +15 V pin enabled so that it can be used as a test point. Use caution with this option since any voltage applied here will also be present on both the RF output and input center pins.

TYPE N OR BNC CONNECTORS

Add Suffix “-N” or “-BNC”

Type N-female and type BNC-female are available for all outlines 1 through 5, 12, 13 and 15 amplifiers. Add connector type after model number. Examples: AU-2A-0150-N; AU-2A-0150-BNC. Type N-male and mixed connector types are also available on request. Please call MITEQ with your specific requirements.

INPUT INTERNAL LIMITER

Add Suffix “-1103”

Available on models up to 500 MHz. Will protect the input stage from CW signals as high as +30 dBm. To order, add “-1103” after model number. Example: AU-2A-0150-1103. Options are available for protection against short duration pulses up to 50 W.

AC POWER SUPPLY (100 to 240 VAC, 47 - 440 Hz). Add Suffix “-1179”

Available as an add-on to most models using outlines 1 through 5 and 15. Includes 6-foot line cord with standard US line plug, internal fuse, on/off switch and LED indicator light. Amplifier is permanently mounted to power supply. To order, add “-1179” after model number. Example: AU-2A-0150-1179. Refer to outline 12 for dimensions.

AC POWER SUPPLY (Wall plug-in unit) Part Number “205531-19”

A low cost alternate to option “-1179”, the wall plug-in unit is a small switching power supply capable of delivering 1 amp at 15 volts.

AC POWER SUPPLY WITH SMC CONNECTORS (Wall plug-in unit) Part Number “-1179SC”

Same as above except has mating SMC connectors on amplifier DC input and power supply DC output. Available for outlines 1 through 10, 13 and 15.

ADDITIONAL OPTIONS AVAILABLE

OPTION	SUFFIX
Gain Window	-GW
Phase Match	-PM
Amplitude Match	-AM
Gain Control	-GC

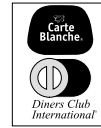


100 Davids Drive, Hauppauge, NY 11788
TEL.: (631) 439-9220 • FAX: (631) 436-7430
e-mail: components@miteq.com • www.miteq.com

GENERAL INFORMATION

PRICING AND TERMS

A quotation on any item in the catalog is available by contacting the factory. All quotations, unless otherwise noted, are valid for 60 days from the date of issue, F.O.B. (FCA) Hauppauge, NY 11788. Pricing does not include customer or government source inspection unless otherwise noted. On international orders, an irrevocable letter of credit may be required. MITEQ accepts these credit cards:



QUANTITY DISCOUNTS

A quantity discount is generally available on most catalog items. Due to the wide variety of devices in the catalog, it is not possible to provide a standard discount schedule. When quantities are involved, please contact the factory and the appropriate information will be provided.

SOURCE INSPECTION

Government / customer source inspection is available on any item upon receipt of the complete written confirmation of purchase order items, including the prime government contract number. Source inspection with respect to some products increases the unit price and extends delivery because of duplicate standard final inspection and testing. It is recommended wherever possible that a Certificate of Compliance be substituted for source inspection to minimize price and delivery delays.

SHIPPING INFORMATION

Unless instructed otherwise by the customer, we will ship UPS in the U.S. F.O.B. (FCA) Hauppauge. Air freight will be used as the primary international means of shipment. Please indicate at time of purchase what method of shipment you require.

RETURNED MATERIAL

When returning material for repair or replacement, please ensure that there is complete information included with the shipment, giving a detailed description of the reason for its return, the date and purchase order on which it was obtained, and the exact address to which the material is to be reshipped. All returns must arrive freight, postage, duties and handling prepaid.

REPAIR COSTS

Warranty repairs will be made at no cost to the customer. Units out of warranty, or those which have been mishandled, will require approval by the customer for the charges involved before the repairs can be accomplished. We will provide an estimate for the cost of the repair, which can be applied to the repair, if approval is granted. For those items that are deemed beyond repair, or where the customer may decide not to repair the unit, an evaluation fee and handling charge will be applicable.

APPLICATION ENGINEERING

We maintain a large support staff of engineers who are experts in specific areas of microwave technology. Each has an engineering background that combines both a formal engineering education with training and experience in product design. As further technical support, we make available the services of our engineering and scientific staff, who may be consulted on more advanced circuit designs or application problems.

DRAWINGS AND SPECIFICATIONS

The material presented in this catalog was current at the time of publication. MITEQ Inc.'s continuing product improvement program makes it necessary to reserve the right to change our mechanical and electrical specifications without notice. If either of these parameters is critical, please contact the factory to verify that the information is current.

ADDITIONAL INFORMATION

WARRANTY

ISO 9001:2000 Certified



MITEQ FEDERAL SUPPLY CODE

Our Federal Supply Code is: 33592



100 Davids Drive, Hauppauge, NY 11788
TEL.: (631) 439-9220 • FAX: (631) 436-7430
e-mail: components@miteq.com • www.miteq.com