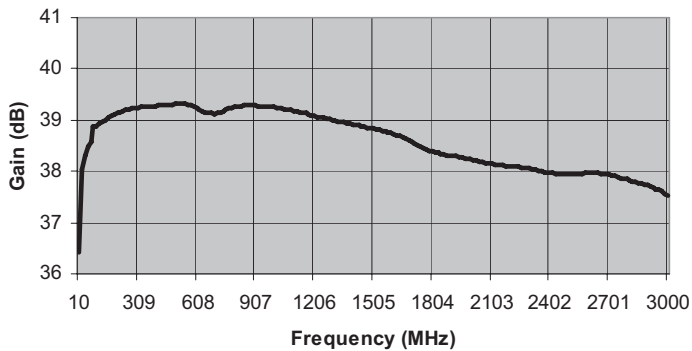


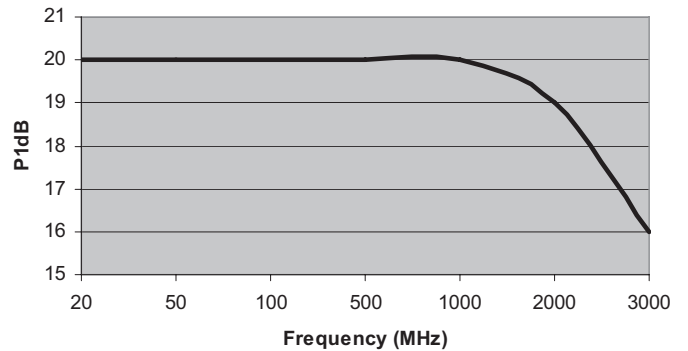
MITEQ AM-1367 SERIES AMPLIFIER

FREQUENCY (MHz)	MODEL NUMBER	GAIN (dB) (Min.)	VAR. (\pm dB) (Max.)	VSWR (Max.)	IMPED. IN/OUT (Ohms)	NOISE FIGURE (dB, Typ.)	P1 dB (dBm) (Typ.)	VOLTS	NOM. DC POWER (mA)	OUTLINE NO.
20-3000	AM-1367	38	1.25	2.2:1	50/50	6	18	15	260	3

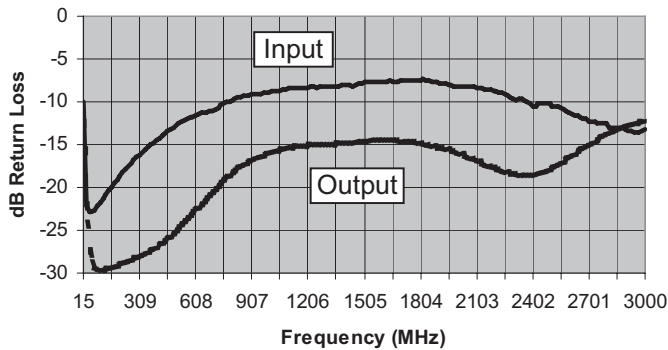
Gain



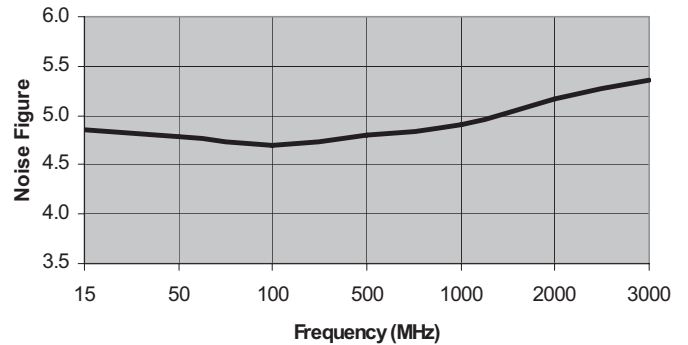
Output -1dB Gain Compression (+dBm)



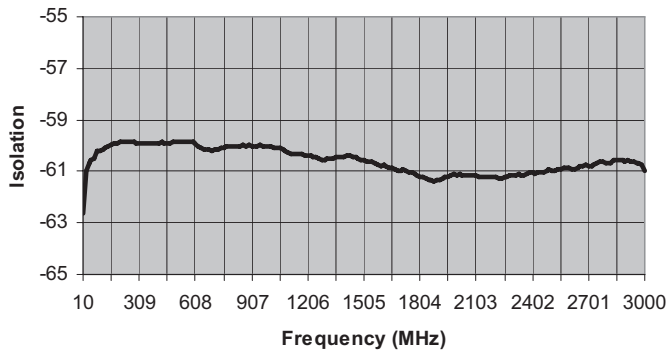
Input & Output Return Loss (dBRL)



Noise Figure (dB)



Reverse Isolation (dB)



ISO 9001:2000 Certified • General Information • Warranty



100 Davids Drive, Hauppauge, NY 11788
 TEL.: (631) 439-9220 • FAX: (631) 436-7430
 e-mail: components@miteq.com • www.miteq.com

MITEQ AM-1367 SERIES AMPLIFIER

Freq (MHz)	Gain (dB)
10	36
25	38
40	38
55	38
70	39
85	39
100	39
115	39
130	39
145	39
160	39
174	39
189	39
204	39
219	39
234	39
249	39
264	39
279	39
294	39
309	39
324	39
339	39
354	39
369	39
384	39
399	39
414	39
429	39
444	39
459	39
473	39
488	39
503	39
518	39
533	39
548	39
563	39
578	39
593	39
608	39
623	39
638	39
653	39
668	39
683	39
698	39
713	39
728	39
743	39
758	39
772	39
787	39
802	39
817	39
832	39
847	39
862	39
877	39
892	39
907	39
922	39
937	39
952	39

Freq (MHz)	Gain (dB)
967	39
982	39
997	39
1012	39
1027	39
1042	39
1057	39
1071	39
1086	39
1101	39
1116	39
1131	39
1146	39
1161	39
1176	39
1191	39
1206	39
1221	39
1236	39
1251	39
1266	39
1281	39
1296	39
1311	39
1326	39
1341	39
1356	39
1370	39
1385	39
1400	39
1415	39
1430	39
1445	39
1460	39
1475	39
1490	39
1505	39
1520	39
1535	39
1550	39
1565	39
1580	39
1595	39
1610	39
1625	39
1640	39
1655	39
1669	39
1684	39
1699	39
1714	39
1729	39
1744	38
1759	38
1774	38
1789	38
1804	38
1819	38
1834	38
1849	38
1864	38
1879	38
1894	38
1909	38

Freq (MHz)	Gain (dB)
1924	38
1939	38
1954	38
1968	38
1983	38
1998	38
2013	38
2028	38
2043	38
2058	38
2073	38
2088	38
2103	38
2118	38
2133	38
2148	38
2163	38
2178	38
2193	38
2208	38
2223	38
2238	38
2253	38
2267	38
2282	38
2297	38
2312	38
2327	38
2342	38
2357	38
2372	38
2387	38
2402	38
2417	38
2432	38
2447	38
2462	38
2477	38
2492	38
2507	38
2522	38
2537	38
2552	38
2566	38
2581	38
2596	38
2611	38
2626	38
2641	38
2656	38
2671	38
2686	38
2701	38
2716	38
2731	38
2746	38
2761	38
2776	38
2791	38
2806	38
2821	38
2836	38
2851	38
2865	38

Freq (MHz)	Gain (dB)
2880	38
2895	38
2910	38
2925	38
2940	38
2955	38
2970	38
2985	38
3000	38



100 Davids Drive, Hauppauge, NY 11788
 TEL.: (631) 439-9220 • FAX: (631) 436-7430
 e-mail: components@miteq.com • www.miteq.com

MITEQ AM-1367 SERIES AMPLIFIER

Freq (MHz)	Input VSWR (dBRL)	Output VSWR (dBRL)
15	-10	-12
25	-22	-24
40	-23	-28
55	-23	-29
70	-23	-29
85	-22	-30
100	-22	-30
115	-21	-30
130	-21	-30
145	-20	-29
160	-20	-29
174	-20	-29
189	-19	-29
204	-19	-29
219	-18	-29
234	-18	-29
249	-18	-28
264	-17	-28
279	-17	-28
294	-17	-28
309	-16	-28
324	-16	-28
339	-16	-28
354	-15	-28
369	-15	-27
384	-15	-27
399	-14	-27
414	-14	-27
429	-14	-26
444	-14	-26
459	-13	-26
473	-13	-26
488	-13	-25
503	-13	-25
518	-13	-25
533	-12	-24
548	-12	-24
563	-12	-24
578	-12	-23
593	-12	-23
608	-12	-23
623	-11	-22
638	-11	-22
653	-11	-22
668	-11	-21
683	-11	-21
698	-11	-20
713	-11	-20
728	-11	-20
743	-10	-19
758	-10	-19
772	-10	-19
787	-10	-19
802	-10	-18
817	-10	-18
832	-10	-18
847	-9	-18
862	-9	-17
877	-9	-17
892	-9	-17
907	-9	-17
922	-9	-17
937	-9	-16

Freq (MHz)	Input VSWR (dBRL)	Output VSWR (dBRL)
952	-9	-16
967	-9	-16
982	-9	-16
997	-9	-16
1012	-9	-16
1027	-9	-16
1042	-9	-16
1057	-9	-16
1071	-9	-15
1086	-8	-15
1101	-8	-15
1116	-8	-15
1131	-8	-15
1146	-8	-15
1161	-8	-15
1176	-8	-15
1191	-8	-15
1206	-8	-15
1221	-8	-15
1236	-8	-15
1251	-8	-15
1266	-8	-15
1281	-8	-15
1296	-8	-15
1311	-8	-15
1326	-8	-15
1341	-8	-15
1356	-8	-15
1370	-8	-15
1385	-8	-15
1400	-8	-15
1415	-8	-15
1430	-8	-15
1445	-8	-15
1460	-8	-15
1475	-8	-15
1490	-8	-15
1505	-8	-15
1520	-8	-15
1535	-8	-15
1550	-8	-15
1565	-8	-15
1580	-8	-15
1595	-8	-14
1610	-8	-15
1625	-8	-15
1640	-8	-15
1655	-8	-15
1669	-8	-15
1684	-8	-15
1699	-8	-15
1714	-8	-15
1729	-7	-15
1744	-7	-15
1759	-7	-15
1774	-7	-15
1789	-7	-15
1804	-7	-15
1819	-7	-15
1834	-7	-15
1849	-8	-15
1864	-8	-15
1879	-8	-15

Freq (MHz)	Input VSWR (dBRL)	Output VSWR (dBRL)
1894	-8	-15
1909	-8	-15
1924	-8	-15
1939	-8	-15
1954	-8	-16
1968	-8	-16
1983	-8	-16
1998	-8	-16
2013	-8	-16
2028	-8	-16
2043	-8	-16
2058	-8	-16
2073	-8	-17
2088	-8	-17
2103	-8	-17
2118	-8	-17
2133	-8	-17
2148	-8	-17
2163	-9	-17
2178	-9	-18
2193	-9	-18
2208	-9	-18
2223	-9	-18
2238	-9	-18
2253	-9	-18
2267	-9	-18
2282	-9	-18
2297	-10	-18
2312	-10	-18
2327	-10	-19
2342	-10	-19
2357	-10	-19
2372	-10	-19
2387	-10	-18
2402	-10	-19
2417	-10	-18
2432	-10	-18
2447	-10	-18
2462	-10	-18
2477	-10	-18
2492	-10	-18
2507	-11	-18
2522	-11	-17
2537	-11	-17
2552	-11	-17
2566	-11	-17
2581	-11	-17
2596	-11	-16
2611	-11	-16
2626	-12	-16
2641	-12	-16
2656	-12	-16
2671	-12	-15
2686	-12	-15
2701	-12	-15
2716	-12	-15
2731	-12	-15
2746	-12	-14
2761	-12	-14
2776	-12	-14
2791	-13	-14
2806	-13	-14
2821	-13	-14

Freq (MHz)	Input VSWR (dBRL)	Output VSWR (dBRL)
2836	-13	-13
2851	-13	-13
2865	-13	-13
2880	-13	-13
2895	-13	-13
2910	-13	-13
2925	-13	-13
2940	-13	-13
2955	-14	-12
2970	-13	-12
2985	-13	-12
3000	-13	-12



100 Davids Drive, Hauppauge, NY 11788
 TEL.: (631) 439-9220 • FAX: (631) 436-7430
 e-mail: components@miteq.com • www.miteq.com

MITEQ AM-1367 SERIES AMPLIFIER

Freq. (MHz)	Reverse Isolation (dB)
10.00	-63
24.95	-61
39.90	-61
54.85	-61
69.80	-60
84.75	-60
99.70	-60
114.65	-60
129.60	-60
144.55	-60
159.50	-60
174.45	-60
189.40	-60
204.35	-60
219.30	-60
234.25	-60
249.20	-60
264.15	-60
279.10	-60
294.05	-60
309.00	-60
323.95	-60
338.90	-60
353.85	-60
368.80	-60
383.75	-60
398.70	-60
413.65	-60
428.60	-60
443.55	-60
458.50	-60
473.45	-60
488.40	-60
503.35	-60
518.30	-60
533.25	-60
548.20	-60
563.15	-60
578.10	-60
593.05	-60
608.00	-60
622.95	-60
637.90	-60
652.85	-60
667.80	-60
682.75	-60
697.70	-60
712.65	-60
727.60	-60
742.55	-60
757.50	-60
772.45	-60
787.40	-60
802.35	-60
817.30	-60
832.25	-60
847.20	-60
862.15	-60
877.10	-60
892.05	-60
907.00	-60
921.95	-60
936.90	-60

Freq. (MHz)	Reverse Isolation (dB)
951.85	-60
966.80	-60
981.75	-60
996.70	-60
1011.65	-60
1026.60	-60
1041.55	-60
1056.50	-60
1071.45	-60
1086.40	-60
1101.35	-60
1116.30	-60
1131.25	-60
1146.20	-60
1161.15	-60
1176.10	-60
1191.05	-60
1206.00	-60
1220.95	-60
1235.90	-60
1250.85	-60
1265.80	-60
1280.75	-61
1295.70	-61
1310.65	-61
1325.60	-60
1340.55	-60
1355.50	-60
1370.45	-60
1385.40	-60
1400.35	-60
1415.30	-60
1430.25	-60
1445.20	-60
1460.15	-60
1475.10	-61
1490.05	-61
1505.00	-61
1519.95	-61
1534.90	-61
1549.85	-61
1564.80	-61
1579.75	-61
1594.70	-61
1609.65	-61
1624.60	-61
1639.55	-61
1654.50	-61
1669.45	-61
1684.40	-61
1699.35	-61
1714.30	-61
1729.25	-61
1744.20	-61
1759.15	-61
1774.10	-61
1789.05	-61
1804.00	-61
1818.95	-61
1833.90	-61
1848.85	-61
1863.80	-61
1878.75	-61

Freq. (MHz)	Reverse Isolation (dB)
1893.70	-61
1908.65	-61
1923.60	-61
1938.55	-61
1953.50	-61
1968.45	-61
1983.40	-61
1998.35	-61
2013.30	-61
2028.25	-61
2043.20	-61
2058.15	-61
2073.10	-61
2088.05	-61
2103.00	-61
2117.95	-61
2132.90	-61
2147.85	-61
2162.80	-61
2177.75	-61
2192.70	-61
2207.65	-61
2222.60	-61
2237.55	-61
2252.50	-61
2267.45	-61
2282.40	-61
2297.35	-61
2312.30	-61
2327.25	-61
2342.20	-61
2357.15	-61
2372.10	-61
2387.05	-61
2402.00	-61
2416.95	-61
2431.90	-61
2446.85	-61
2461.80	-61
2476.75	-61
2491.70	-61
2506.65	-61
2521.60	-61
2536.55	-61
2551.50	-61
2566.45	-61
2581.40	-61
2596.35	-61
2611.30	-61
2626.25	-61
2641.20	-61
2656.15	-61
2671.10	-61
2686.05	-61
2701.00	-61
2715.95	-61
2730.90	-61
2745.85	-61
2760.80	-61
2775.75	-61
2790.70	-61
2805.65	-61
2820.60	-61

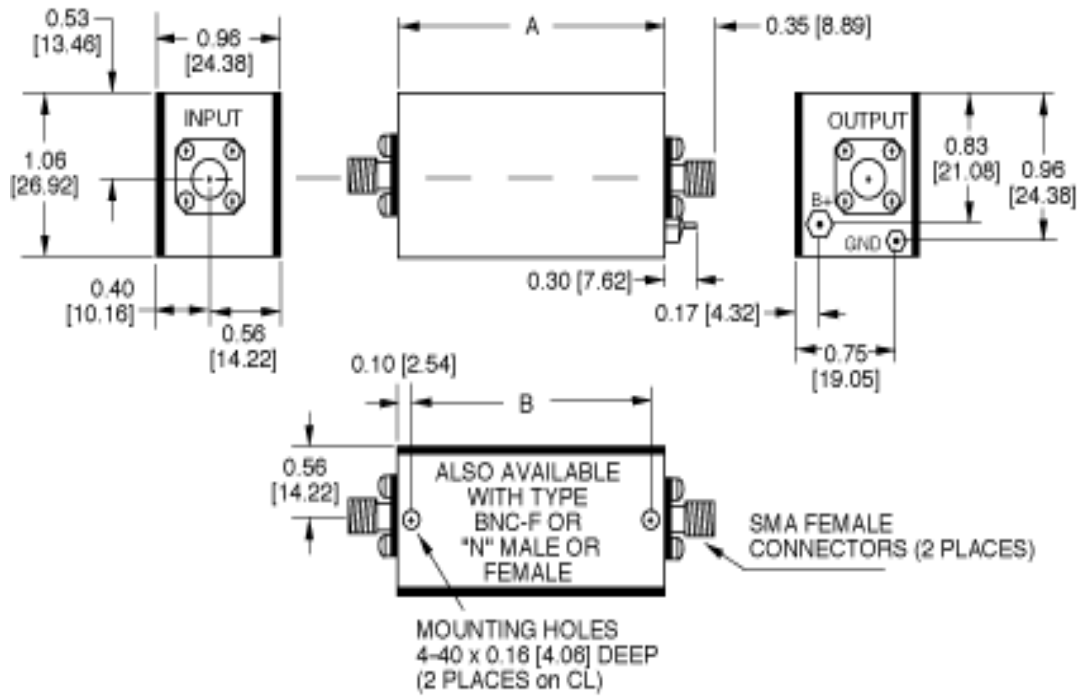
Freq. (MHz)	Reverse Isolation (dB)
2835.55	-61
2850.50	-61
2865.45	-61
2880.40	-61
2895.35	-61
2910.30	-61
2925.25	-61
2940.20	-61
2955.15	-61
2970.10	-61
2985.05	-61
3000.00	-61



100 Davids Drive, Hauppauge, NY 11788
 TEL.: (631) 439-9220 • FAX: (631) 436-7430
 e-mail: components@miteq.com • www.miteq.com

MITEQ AM-1367 SERIES AMPLIFIER

OUTLINE	DIM A	DIM B	OUNCES
3	2.74 [69.60]	2.54 [64.52]	2.9



NOTE: DIMENSIONS ARE IN INCHES [MILLIMETERS].

OPTIONS FOR BIPOLAR AMPLIFIERS

INPUT BIAS TEE

Add Suffix "-F"

Used to inject bias signal to photo diode or other type of device. Check for availability on your model before ordering. Available on most units operating above 1 MHz. Please contact MITEQ with your custom requirements.

BIAS THROUGH THE OUTPUT CONNECTOR

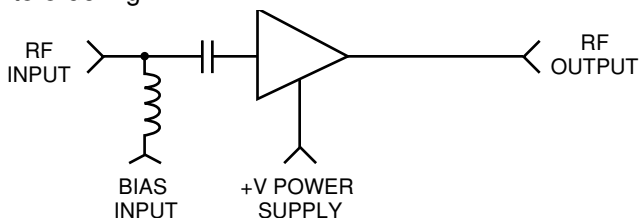
Add Suffix "-1306/E" or "-1306/D"

Used to supply operating power when the amplifier is remotely located while eliminating the need to run a separate DC line. Specify whether existing power pin should be "Enabled" or "Disabled." To order, add -1306/E or -1306/D after model number. Example: AU-2A-0150-1306/E will have existing +15 V pin enabled so that it can be used as a test point. Use caution with this option since any voltage applied here will also be present on the RF output center pin. Available on most units operating above 1 MHz.

BIAS THROUGH THE OUTPUT CONNECTOR WITH DC FEEDTHROUGH TO RF INPUT

Add Suffix "-1334/E" or "-1334/D"

Used to supply operating power when the amplifier is remotely located and eliminates the need to run a separate DC line. This DC voltage is then internally fed to the RF input to power a remote LNA or other low power equipment. Maximum current of external load will vary with model type. Available on most units operating above 1 MHz. Please contact factory prior to ordering.



Specify whether existing power pin should be "Enabled" or "Disabled". To order, add "-1334/E" or "-1334/D"

after model number. Example: AU-2A-0150-1334/E will have existing +15 V pin enabled so that it can be used as a test point. Use caution with this option since any voltage applied here will also be present on both the RF output and input center pins.

TYPE N OR BNC CONNECTORS

Add Suffix "-N" or "-BNC"

Type N-female and type BNC-female are available for all outlines 1 through 5, 12, 13 and 15 amplifiers. Add connector type after model number. Examples: AU-2A-0150-N; AU-2A-0150-BNC. Type N-male and mixed connector types are also available on request. Please call MITEQ with your specific requirements.

INPUT INTERNAL LIMITER

Add Suffix "-1103"

Available on models up to 500 MHz. Will protect the input stage from CW signals as high as +30 dBm. To order, add "-1103" after model number. Example: AU-2A-0150-1103. Options are available for protection against short duration pulses up to 50 W.

AC POWER SUPPLY (100 to 240 VAC, 47 - 440 Hz). Add Suffix "-1179"

Available as an add-on to most models using outlines 1 through 5 and 15. Includes 6-foot line cord with standard US line plug, internal fuse, on/off switch and LED indicator light. Amplifier is permanently mounted to power supply. To order, add "-1179" after model number. Example: AU-2A-0150-1179. Refer to outline 12 for dimensions.

AC POWER SUPPLY (Wall plug-in unit) Part Number "205531-19"

A low cost alternate to option "-1179", the wall plug-in unit is a small switching power supply capable of delivering 1 amp at 15 volts.

AC POWER SUPPLY WITH SMC CONNECTORS (Wall plug-in unit) Part Number "-1179SC"

Same as above except has mating SMC connectors on amplifier DC input and power supply DC output. Available for outlines 1 through 10, 13 and 15.

ADDITIONAL OPTIONS AVAILABLE

OPTION	SUFFIX
Gain Window	-GW
Phase Match	-PM
Amplitude Match	-AM
Gain Control	-GC

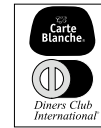


100 Davids Drive, Hauppauge, NY 11788
TEL.: (631) 439-9220 • FAX: (631) 436-7430
e-mail: components@miteq.com • www.miteq.com

GENERAL INFORMATION

PRICING AND TERMS

A quotation on any item in the catalog is available by contacting the factory. All quotations, unless otherwise noted, are valid for 60 days from the date of issue, F.O.B. (FCA) Hauppauge, NY 11788. Pricing does not include customer or government source inspection unless otherwise noted. On international orders, an irrevocable letter of credit may be required. MITEQ accepts these credit cards:



QUANTITY DISCOUNTS

A quantity discount is generally available on most catalog items. Due to the wide variety of devices in the catalog, it is not possible to provide a standard discount schedule. When quantities are involved, please contact the factory and the appropriate information will be provided.

SOURCE INSPECTION

Government / customer source inspection is available on any item upon receipt of the complete written confirmation of purchase order items, including the prime government contract number. Source inspection with respect to some products increases the unit price and extends delivery because of duplicate standard final inspection and testing. It is recommended wherever possible that a Certificate of Compliance be substituted for source inspection to minimize price and delivery delays.

SHIPPING INFORMATION

Unless instructed otherwise by the customer, we will ship UPS in the U.S. F.O.B. (FCA) Hauppauge. Air freight will be used as the primary international means of shipment. Please indicate at time of purchase what method of shipment you require.

RETURNED MATERIAL

When returning material for repair or replacement, please ensure that there is complete information included with the shipment, giving a detailed description of the reason for its return, the date and purchase order on which it was obtained, and the exact address to which the material is to be reshipped. All returns must arrive freight, postage, duties and handling prepaid.

REPAIR COSTS

Warranty repairs will be made at no cost to the customer. Units out of warranty, or those which have been mishandled, will require approval by the customer for the charges involved before the repairs can be accomplished. We will provide an estimate for the cost of the repair, which can be applied to the repair, if approval is granted. For those items that are deemed beyond repair, or where the customer may decide not to repair the unit, an evaluation fee and handling charge will be applicable.

APPLICATION ENGINEERING

We maintain a large support staff of engineers who are experts in specific areas of microwave technology. Each has an engineering background that combines both a formal engineering education with training and experience in product design. As further technical support, we make available the services of our engineering and scientific staff, who may be consulted on more advanced circuit designs or application problems.

DRAWINGS AND SPECIFICATIONS

The material presented in this catalog was current at the time of publication. MITEQ Inc.'s continuing product improvement program makes it necessary to reserve the right to change our mechanical and electrical specifications without notice. If either of these parameters is critical, please contact the factory to verify that the information is current.

ADDITIONAL INFORMATION

WARRANTY

ISO 9001:2000 Certified



MITEQ FEDERAL SUPPLY CODE

Our Federal Supply Code is: 33592



100 Davids Drive, Hauppauge, NY 11788
TEL.: (631) 439-9220 • FAX: (631) 436-7430
e-mail: components@miteq.com • www.miteq.com