

# SUBSTRATE AMPLIFIERS

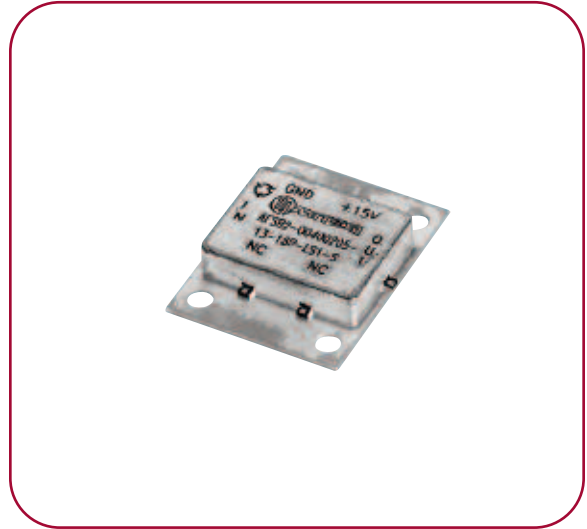
## AFSB SERIES

### FEATURES

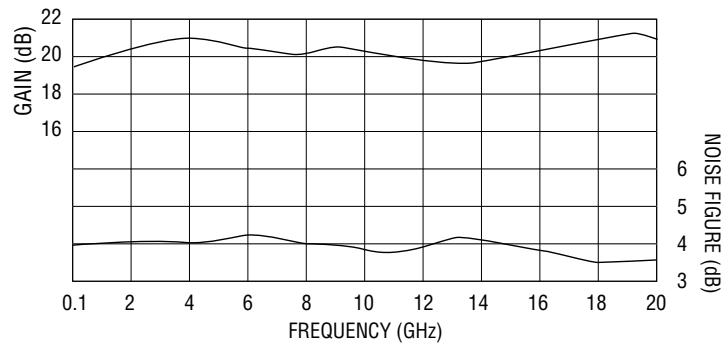
- Ideal for gain blocks and drivers
- Ideal building blocks for your own design: low-noise, interstage and output modules
- Available with low and medium power levels
- 25 mil 50 ohm microstrip interface

### OPTIONS

- Hermetic sealing
- Lower noise figure and customized designs available



**AFSB-00102000-45-10P TYPICAL DATA**



MODEL NUMBER	FREQUENCY RANGE (GHz)	GAIN (dB, Min.)	GAIN FLATNESS (±dB, Max.)	NOISE FIGURE (dB, Max.)	VSWR IN/OUT (Max.)	OUTPUT POWER @ 1 dB COMP. (dBm, Min.)	NOM. DC POWER (+15 V, mA)
<b>OCTAVE AND MULTIOCTAVE</b>							
AFSB-00500100-09-10P	0.5–1	24	1	0.9	2:1	10	125
AFSB-01000200-09-10P	1–2	28	1	0.9	2:1	10	150
AFSB-02000400-15-10P	2–4	30	1	1.5	2:1	10	150
AFSB-02000800-18-10P	2–8	20	1.5	1.8	2:1	10	240
AFSB-12001800-20-10P	12–18	20	1.5	2	2:1	10	240
AFSB-08001800-25-10P	8–18	20	1.75	2.5	2:1	10	240
AFSB-06001800-28-10P	6–18	23	2	2.8	2:1	10	150
AFSB-02001800-30-10P	2–18	20	2.5	3	2:1	10	150
<b>ULTRA-WIDEBAND</b>							
AFSB-00100100-16-18P	0.1–1	13	1	1.6	2.5:1	18	150
AFSB-00100200-15-10P	0.1–2	36	1	1.5	2:1	10	150
AFSB-00100400-20-10P	0.1–4	28	1.25	2	2:1	10	240
AFSB-00100600-20-10P	0.1–6	20	1.5	2	2:1	10	240
AFSB-00100800-25-10P	0.1–8	18	2	2.5	2:1	10	240
AFSB-00101800-45-10P	0.1–18	18	2.5	4.5	2:1	10	240
AFSB-00102000-45-10P	0.1–20	16	2.75	4.5	2.5:1	10	240
<b>MEDIUM POWER</b>							
AFSB-00100600-48-18P	0.1–6	18	2	4.8	2:1	18	375
AFSB-06001800-48-18P	6–18	20	2	4.8	2:1	18	150
AFSB-02001800-70-18P	2–18	20	2.75	7	2:1	18	375

NOTE: See page 66 for outline.



100 Davids Drive, Hauppauge, NY 11788  
 TEL.: (631) 439-9220 • FAX: (631) 436-7430  
 e-mail: components@miteq.com • www.miteq.com