



0.82-2.5 GHz

Commercial Use Directional Couplers

- Complete Series: 10 dB, 20 dB, 30 dB Coupling Values
- High Directivity 25 dB Typical
- SMA and N Connector Models Available

Specifications

Type N (F), 0.82 to 2.1 GHz, 100 W to 500 W

FREQUENCY RANGE (GHz)	MODEL	NOMINAL COUPLING (dB)	DIRECTIVITY (dB min.)	VSWR		FREQUENCY SENSITIVITY (dB max.)	INSERTION LOSS (dB max.)	POWER			WEIGHT (max.)	
				PRIMARY LINE (max.)	SECONDARY LINE (max.)			AVERAGE (W)	REFLECTED (W)	PEAK (kW)	lb.	gr.
0.82-0.98	3151-10	10 ±1.0	20	1.15	1.15	±0.15	0.9	100	5	3	1.12	510
	3151-20	20 ±1.0	30	1.07	1.10	±0.20	0.2	500	50	3	1.12	510
	3151-30	30 ±1.0	30	1.07	1.10	±0.20	0.15	500	500	3	1.12	510
1.7-2.1	3161-10	10 ±1.0	20	1.15	1.20	±0.30	0.7	100	5	3	.86	390
	3161-20	20 ±1.0	20	1.15	1.20	±0.30	0.2	500	50	3	.86	390
	3161-30	30 ±1.0	20	1.15	1.20	±0.30	0.15	500	500	3	.86	390

Type N (F), 0.7 to 2.5 GHz, 500 W

FREQUENCY RANGE (GHz)	MODEL	NOMINAL COUPLING (dB)			DIRECTIVITY (dB min.)	VSWR		FREQUENCY SENSITIVITY (dB max.)	INSERTION LOSS (dB max.)	POWER			WEIGHT (max.)	
		0.7-2.5 GHz	0.82-0.98 GHz	1.8-2.2 GHz		PRIMARY LINE (max.)	SECONDARY LINE (max.)			AVERAGE (W)	REFLECTED (W)	PEAK (kW)	lb.	gr.
0.7-2.5	3171-30	32 ±3.0	33 ±1.6	30 ±1.0	20	1.15	1.20	—	0.15	500	500	3	.88	400

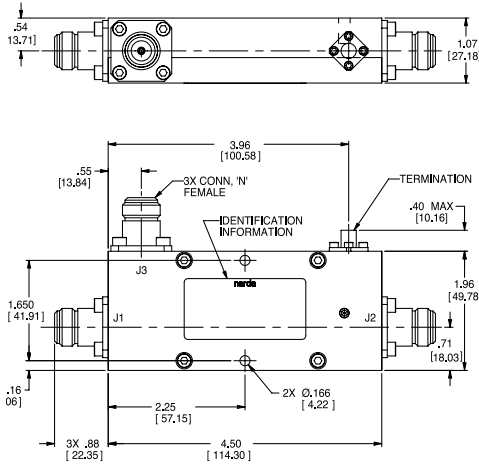
SMA (F), 0.82 to 2.1 GHz, 50 W

FREQUENCY RANGE (GHz)	MODEL	NOMINAL COUPLING (dB)	DIRECTIVITY (dB min.)	VSWR		FREQUENCY SENSITIVITY (dB max.)	INSERTION LOSS (dB max.)	POWER			WEIGHT (max.)	
				PRIMARY LINE (max.)	SECONDARY LINE (max.)			AVERAGE (W)	REFLECTED (W)	PEAK (kW)	oz.	gr.
0.82-0.98	4151-10	10 ±1.0	20	1.15	1.15	±0.15	0.9	50	5	3	14.8	420
	4151-20	20 ±1.0	25	1.12	1.12	±0.15	0.2	50	50	3	14.8	420
	4151-30	30 ±1.0	25	1.12	1.12	±0.15	0.15	50	50	3	14.8	420
1.7-2.1	4161-10	10 ±1.0	20	1.15	1.20	±0.30	0.7	50	5	3	9.9	280
	4161-20	20 ±1.0	20	1.15	1.20	±0.30	0.2	50	50	3	9.9	280
	4161-30	30 ±1.0	20	1.15	1.20	±0.30	0.15	50	50	3	9.9	280

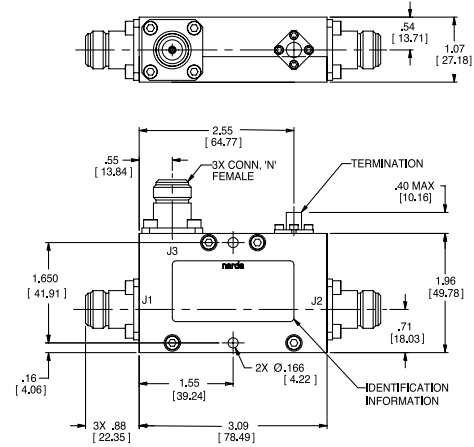


Couplers

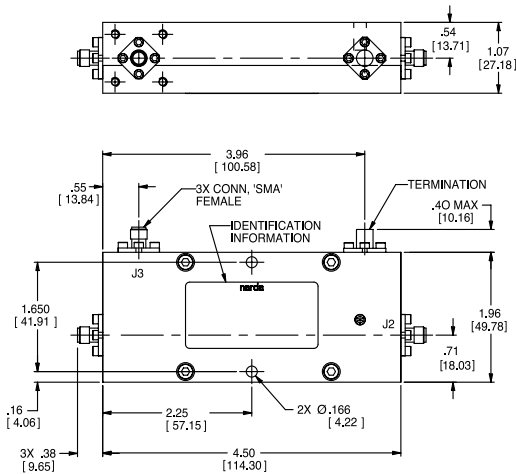
Outline Drawings



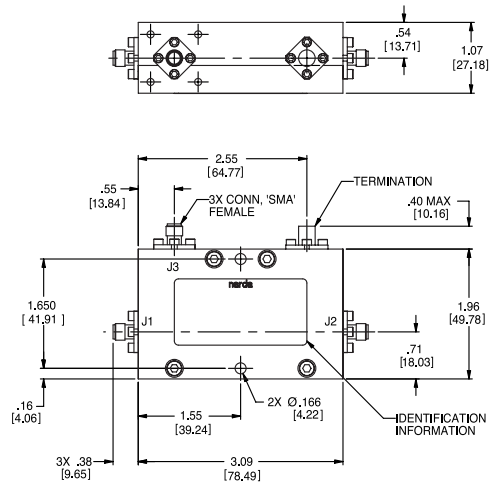
**MODELS 3151-10,
3151-20, 3151-30**



**MODELS 3161-10,
3161-20, 3161-30,
3171-30**



**MODELS 4151-10,
4151-20, 4151-30**



**MODELS 4161-10,
4161-20, 4161-30**

Dimensions in inches (mm in parentheses), unless otherwise specified.