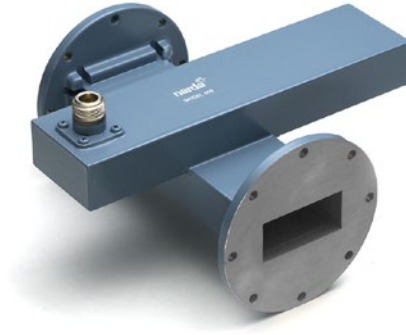


Waveguide Couplers

2.6-40 GHz

Crossguide Directional Couplers

- SMA, 2.92 mm and Type N Connectors
- Standard Waveguide Sizes



Specifications

SMA and 2.92 mm, 7.05 to 40 GHz

FREQUENCY RANGE (GHz)	MODEL	WAVEGUIDE SIZE	FLANGE TYPE	FLANGE EQUIVALENT	COUPLING (dB)	DEVIATION FROM NOMINAL (dB max.)	FREQUENCY SENSITIVITY (dB max.)	DIRECTIVITY (dB min.)	VSWR	
									PRIMARY (max.)	SECONDARY (max.)
7.05 - 10.0	4857	WR112	Cover	UG-138/U	30	±0.5	±1.00	20	1.05	1.25
8.20 - 12.4	4858	WR90	Cover	UG-135/U	30	±0.5	±1.00	20	1.05	1.25
10.0 - 15.0	4859	WR75	Cover	MIL-F-3922/70-017	30	±0.5	±1.00	20	1.05	1.25
18.0 - 26.5	4862	WR42	Cover	UG-597/U	30	±0.5	±1.00	20	1.05	1.25
26.5 - 40.0	4864*	WR28	Cover	UG-599/U	30	±0.5	±1.00	20	1.05	1.25

* Connectors are 2.92 mm

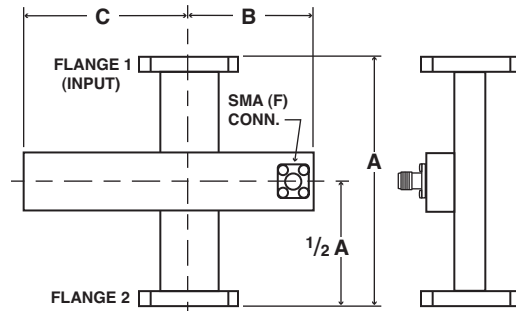
Type N, 2.6 to 15 GHz

FREQUENCY RANGE (GHz)	MODEL	WAVEGUIDE SIZE	FLANGE TYPE	FLANGE EQUIVALENT	COUPLING (dB)	DEVIATION FROM NOMINAL (dB max.)	FREQUENCY SENSITIVITY (dB max.)	DIRECTIVITY (dB min.)	VSWR	
									PRIMARY (max.)	SECONDARY (max.)
2.60 - 3.95	852	WR284	Cover	UG-584/U	30	±0.5	±1.00	20	1.05	1.25
5.85 - 8.20	856	WR137	Cover	UG-441/U	30	±0.5	±1.00	20	1.05	1.25
7.05 - 10.0	857	WR112	Cover	UG-138/U	30	±0.5	±1.00	20	1.05	1.25
10.0 - 15.0	859	WR75	Cover	MIL-F-3922/70-017	30	±0.5	±1.00	20	1.05	1.25

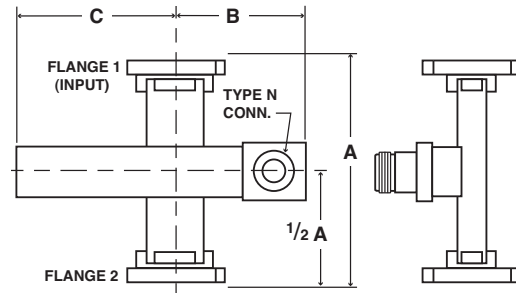
Waveguide Couplers

Outline Drawings

MODEL	DIMENSIONS (inches)		
	A	B	C
4857	4.20	2.10	3.00
4858	4.00	2.00	2.75
4859	3.75	1.87	2.50
4862	2.20	1.10	1.50
4864	2.00	1.00	2.50



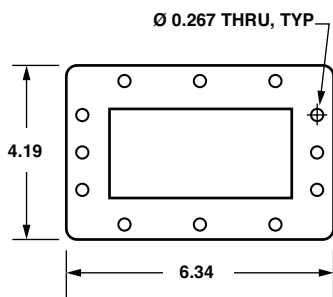
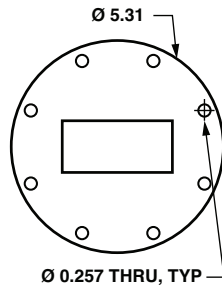
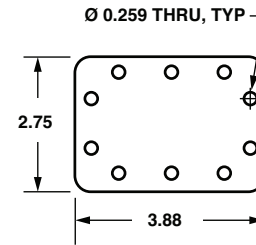
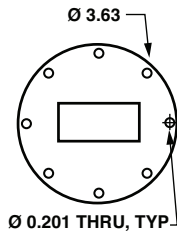
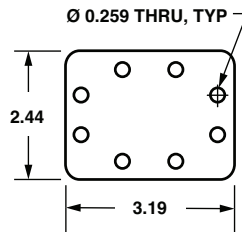
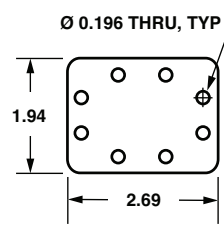
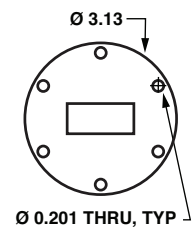
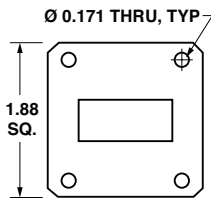
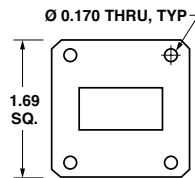
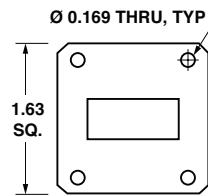
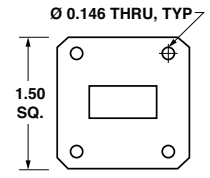
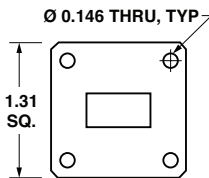
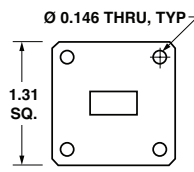
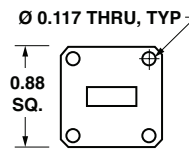
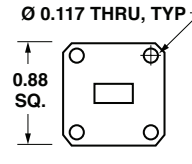
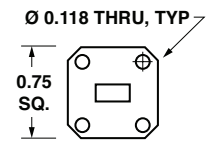
MODEL	DIMENSIONS (inches)		
	A	B	C
852	7.50	3.75	5.00
856	6.00	3.00	4.00
857	4.20	2.10	3.00
859	3.75	1.87	2.50



Dimensions in inches, unless otherwise specified.



Waveguide Flange Data

WR430
(UG-1711/U)WR284
(UG-584/U)WR229
(UG-1727/U)WR187
(UG-407/U)WR159
(UG-1731/U)WR137
(UG-1733/U)WR137
(UG-441/U)WR112
(UG-138/U)WR102
(MIL-F-3922/70-014)WR90
(UG-135/U)WR75
(MIL-F-3922/70-017)WR62
(UG-1665/U)WR51
(MIL-F-3922/70-024)WR42
(UG-597/U)WR34
(UG-1530/U)WR28
(UG-599/U)

For a complete listing of all band letters and codes in use, refer to Band Designation Table on page 183.

Dimensions in inches, unless otherwise specified.